



Local Communities Working to Improve the Nearshore of the Great Lakes

**Sarah Rang,
Great Lakes and St. Lawrence Cities
Initiative**

Latarnell Symposium November 2011

The Great Lakes and St. Lawrence Cities Initiative

- Founded in 2003
- Chair-St. Catharines

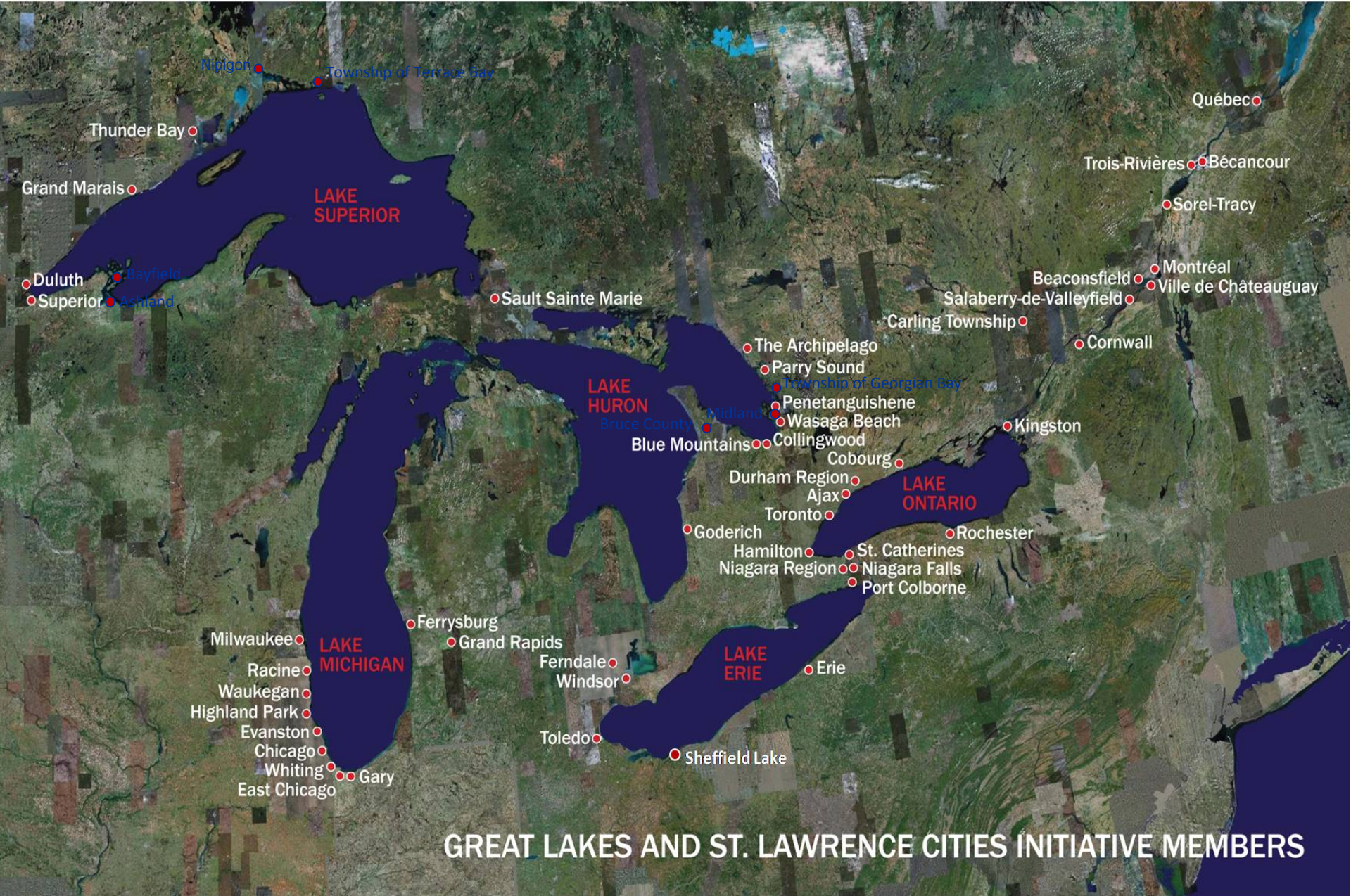
Mayor McMullan

- Vice Chair –

Milwaukee Mayor Barrett

- Currently 80 members, and counting...





GREAT LAKES AND ST. LAWRENCE CITIES INITIATIVE MEMBERS

Cities Initiative: Strategies

- ❑ A Municipal Seat at the Table
- ❑ Collaboration, Best Practices
- ❑ Local Improvements
- ❑ Working with Governments to improve public policy
- ❑ Communications and Outreach



Priorities



- ❑ Invasive Species- Chicago area waterway study
 - ❑ Better beaches and coasts
 - ❑ Mayors Collaborative Five point plan
 - ❑ Great Lakes Water Quality Agreement/COA
 - ❑ Great Lakes Compact/Agreement
 - ❑ Green CiTTs- stormwater
 - ❑ Water conservation framework
-

At the Shoreline: A Mayors' Collaborative Action Plan to Protect the Great Lakes



On May 5th, 2009, the Great Lakes Mayors and Chairs Committee presented their report, *At the Shoreline: A Mayors' Collaborative Action Plan to Protect the Great Lakes*, to the Ontario Ministers of Environment, Natural Resources, and Agriculture, Food and Rural Affairs at the first Provincial-Municipal Great Lakes Summit in Toronto. The report consists of a five point action plan and key recommendations to forge a stronger relationship and strategic coordination among the three orders of government to protect and promote the Great Lakes.



Investments

- Stimulus and infrastructure investments have resulted in improvements to many water and wastewater facilities
- Examples: CSO separation in Hamilton, Toronto, Chatham etc.
- new stormwater facilities in Niagara, Windsor, Toronto etc.
- upgrades to WWTP in Kingston, Nipigon, Red Rock, Cornwall, Owen Sound, Halton, Windsor etc.
- Still work to do!



Nearshore success principles



- Action oriented
- Multi stakeholder
- Integrated
- Funded
- Sense of urgency

Nearshore framework

Support focus on nearshore

Some suggestions

- Monitoring/Assessment with equal resources on action
- Make land link
- Recognise that nearshore efforts need new partners- municipalities etc.
- Learn from Lake Simcoe, Greenbelt, Source water protection and US examples GLRI etc.
- Governance



Municipal Nearshore Examples

1. Land based – Chatham
Kent
2. Water based- Ajax
3. Water and land based-
Southern Georgian Bay
Coastal Initiative

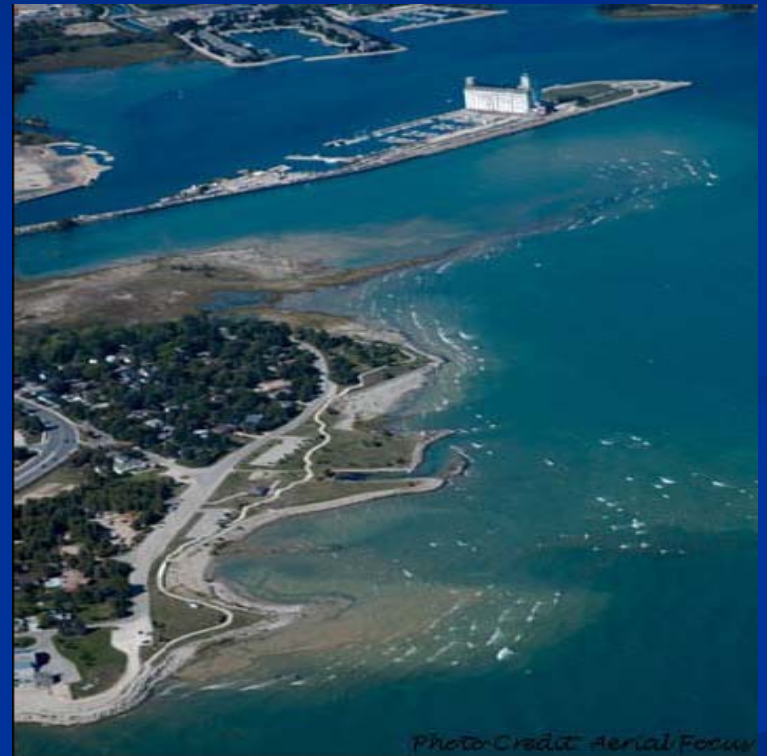
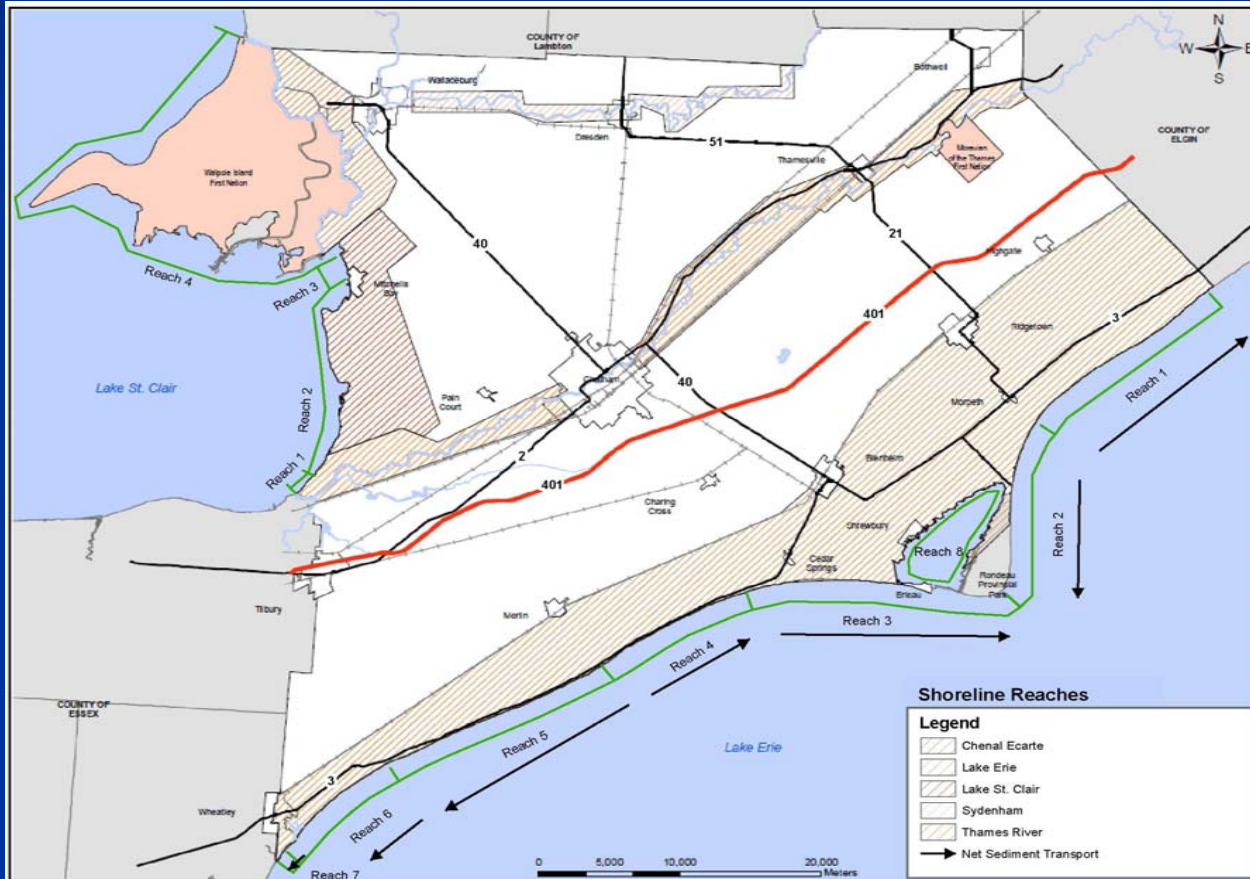


Photo Credit: Aerial Focus

Chatham Kent Sustainable Shorelines Strategy



Chatham Kent



Sustainable Shorelines Strategy

130 km of shoreline along Lake Erie and Lake St. Clair, 170 km along rivers like Thames

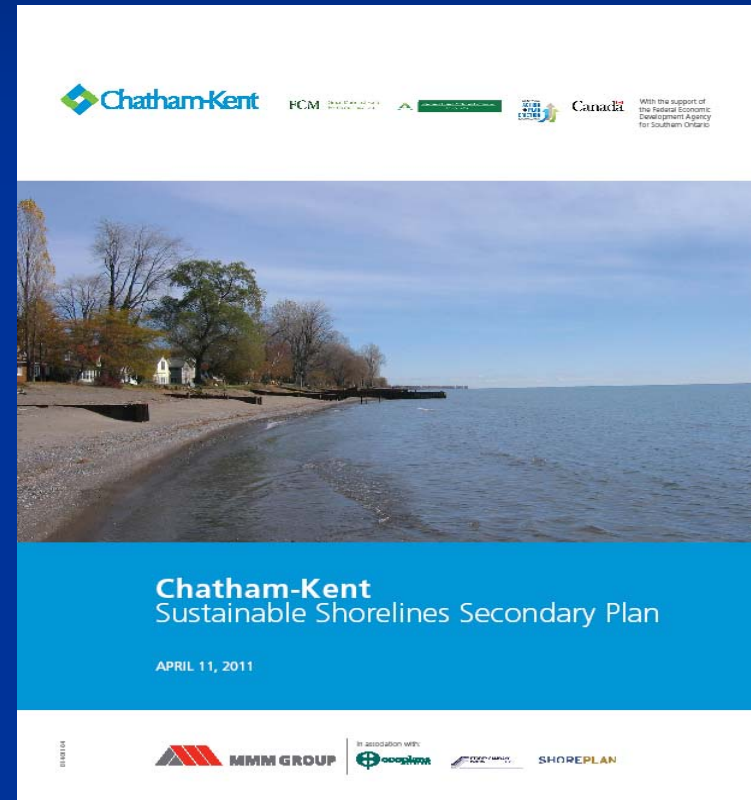
Integrates many components- tourism, urban design, natural environment

Vision, goals and actions to guide development along shoreline and surrounding lands

Implemented also through secondary plan



- Council approved Sustainable Shorelines Strategy and Secondary Plan in April 2011
- Development of shoreline landowners guide



Water based- Ajax



- Ongoing water quality surveys in Ajax Pickering area by many partners
- 15 km stretch of Lake Ontario has WWTP, drinking water intake, cooling water for nuclear power plant, beaches and recreational uses
- Multi year studies, multiple agencies, some with innovative science

Nuisance and Toxic Algae

- Growing problem for many municipalities
- Large public reaction
- Need coordinated strategy
- OPG costs \$8 million/yr
- Municipal costs \$10s million +

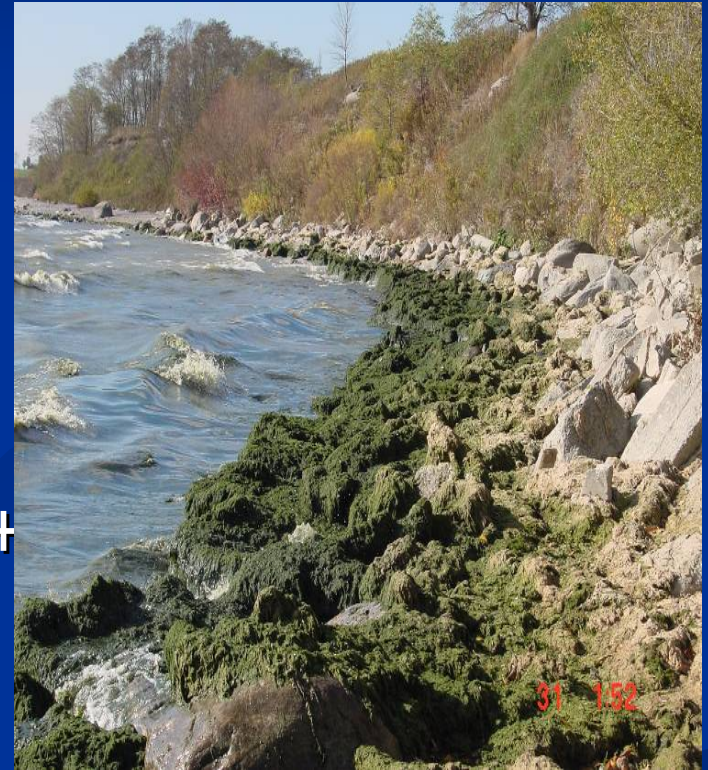


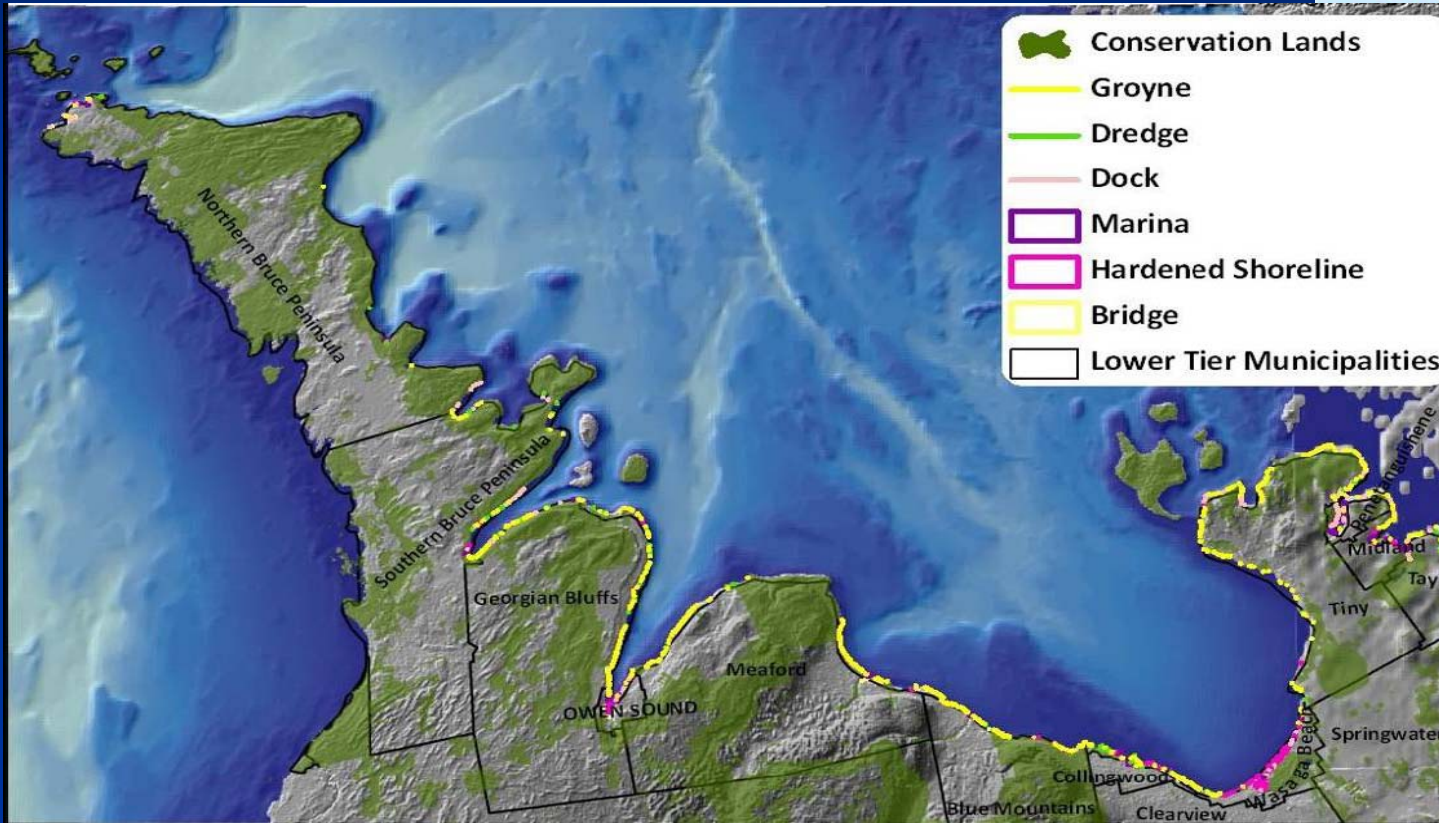
Photo credit: Ministry of Environment

Ajax



- Innovation- Example of working together to coordinate monitoring and actions
- Established that Duffins Creek was source of E.coli
- Large level of monitoring and modelling effort to understand phosphorus source-cladophora growth relationship
- Difficulty in translating nearshore phosphorus monitoring and modeling to 1) sources and 2) agreed upon management actions

Southern Georgian Bay Coastal Initiative



For more information...



- ❑ GLSLCI website: www.glslcities.org
- ❑ Conference Quebec City June 26-28, 2012
- ❑ Contact GLSLCI:

Sarah Rang, Ontario Program Director

Office: 416-427-3535

Email: srang@enveei.com

Nicola Crawhall, Deputy Director

Office: 613-232-1336

Email: nicola.crawhall@rogers.com



Nearshore « spin wheels » scenario



- Science assessment only
- Each agency moves to own drummer- no overarching strategy or governance
- No new partnerships
- Narrow focus on water quality and variability
- No link to land
- No link between data, sources and levers for action
- No application of lessons learnt from Lake Simcoe/Greenbelt/other models
- Existing LAMP structure used for delivery
- Little or no new money
- No sense of urgency