

# A Plan for the Grand

**A new water management study will address important issues in the Grand River watershed and provide strategies for addressing them over the next 25 years.**



**floodcontrol**



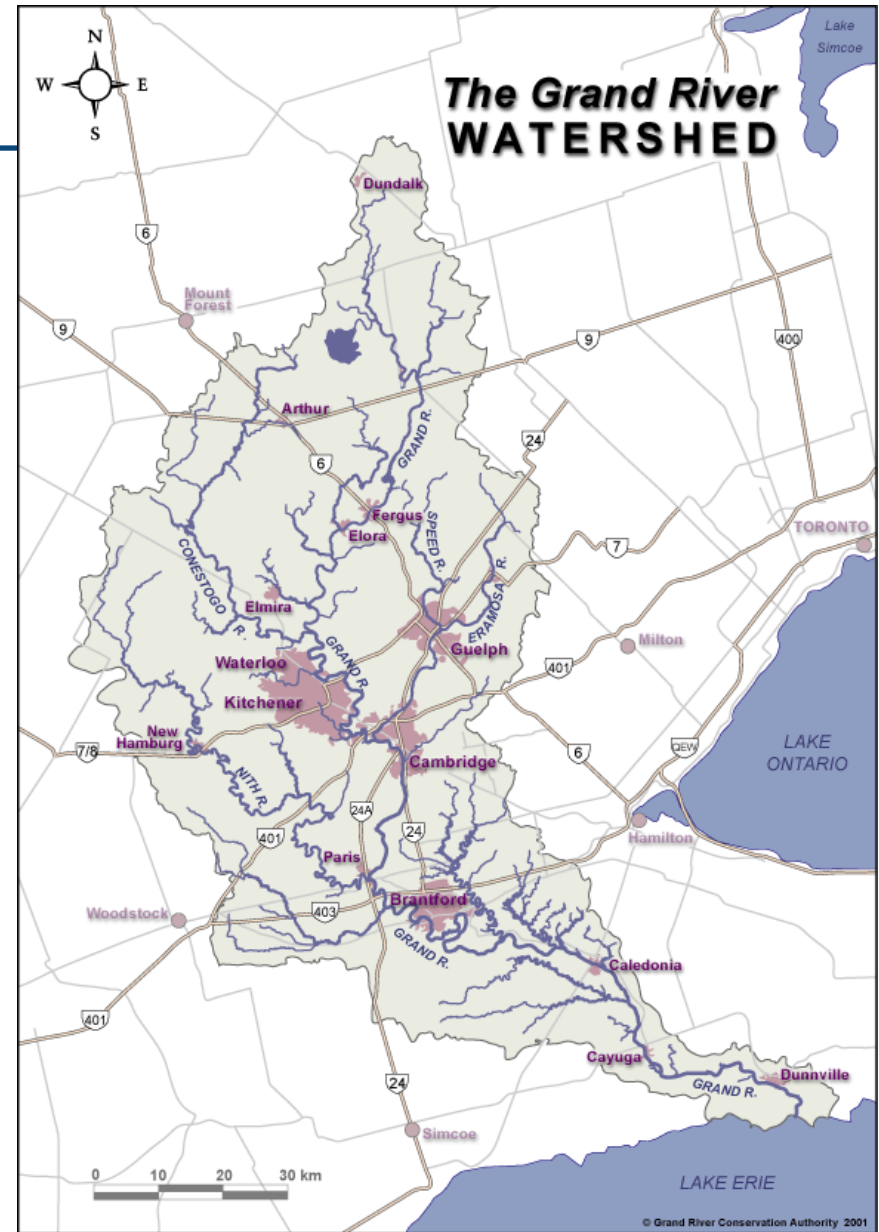
**waterquality**



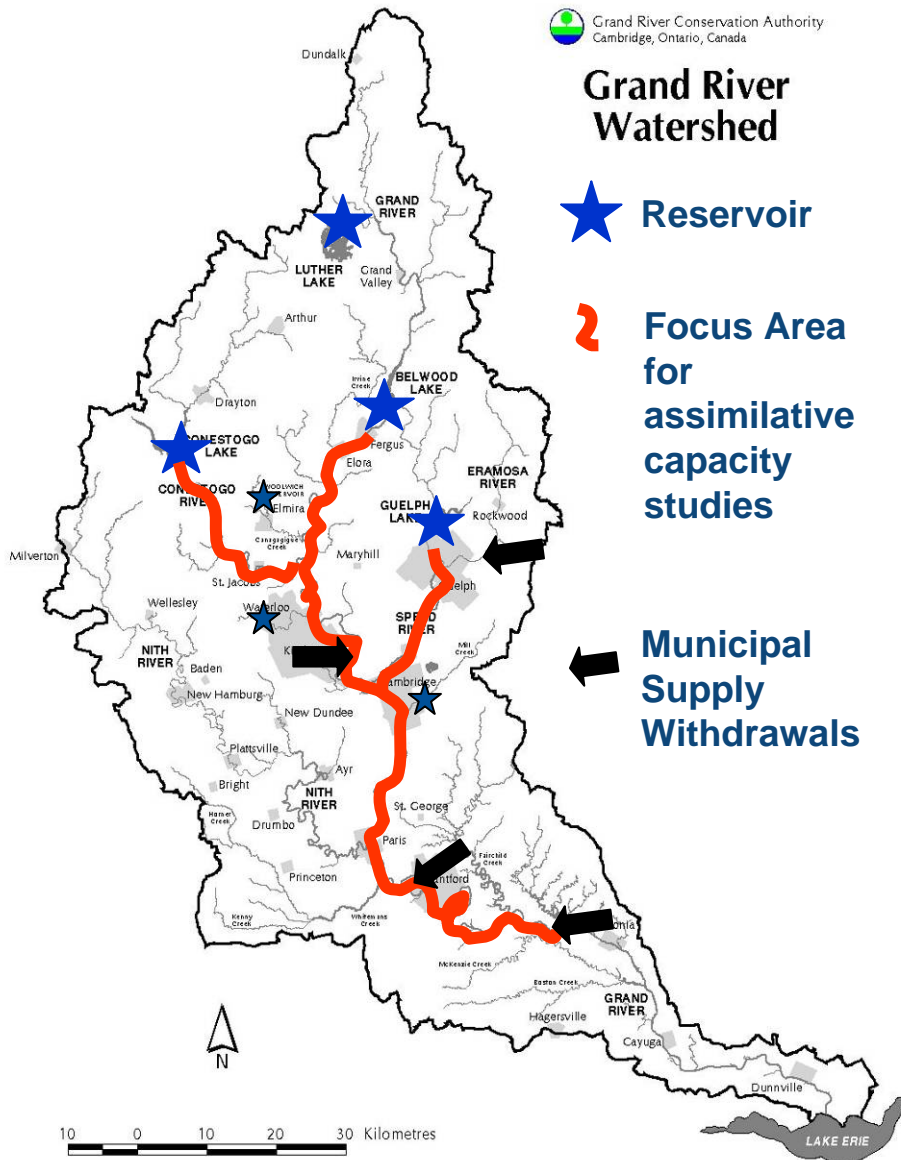
**watersupplies**

# Grand River watershed

- Major tributaries: Conestogo, Speed, Eramosa, Nith
- 39 municipalities, 2 First Nations
- 80% of people live in 5 cities
- 70% is actively farmed
- 70% of water supply from groundwater; 27% from the river
- 29 wastewater treatment plants
- 7 multi-purpose reservoirs

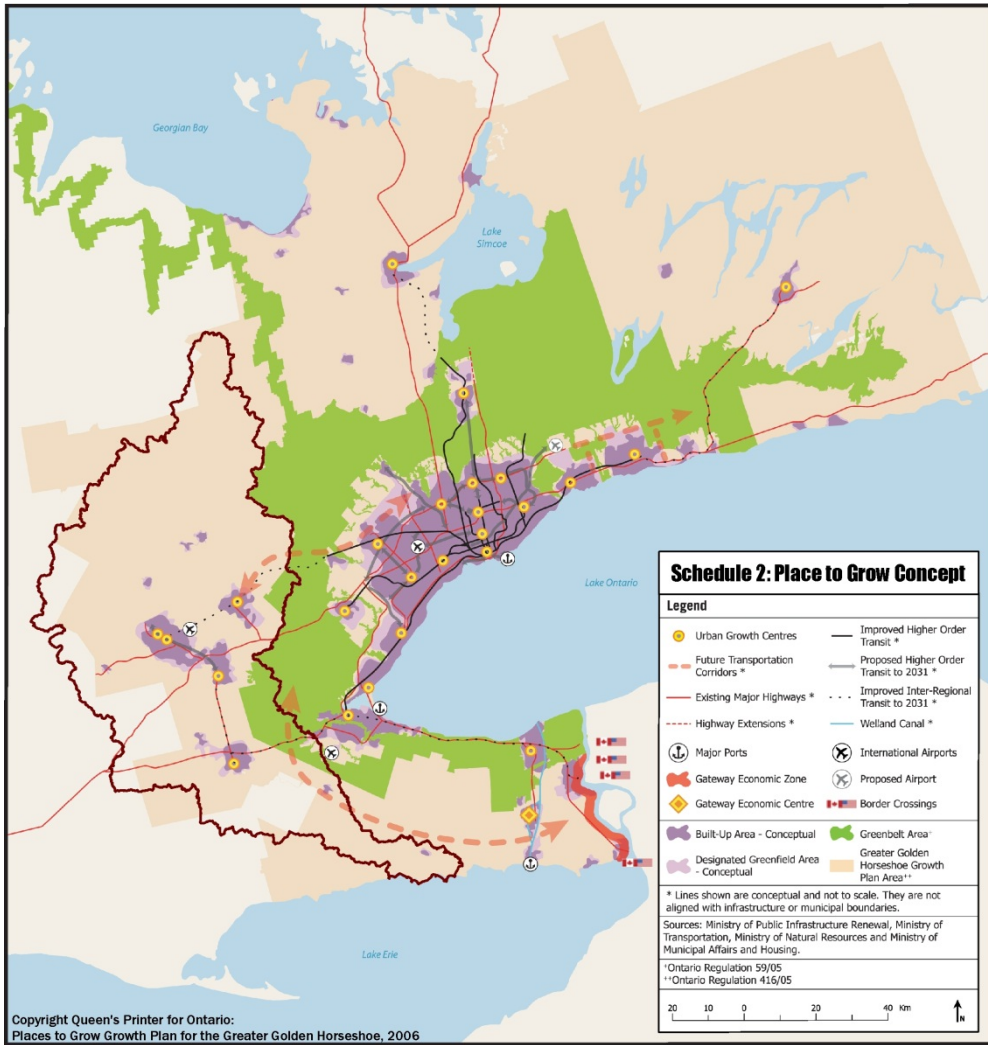


# Multi-Purpose Reservoirs



- 70% of water supply is from groundwater, 27% from the river
- 28 wastewater plants
- 7 multi-purpose reservoirs operated for flood control & low-flow augmentation

# Population Growth



- 46% of the total growth projected by Places to Grow will land in the Grand River watershed

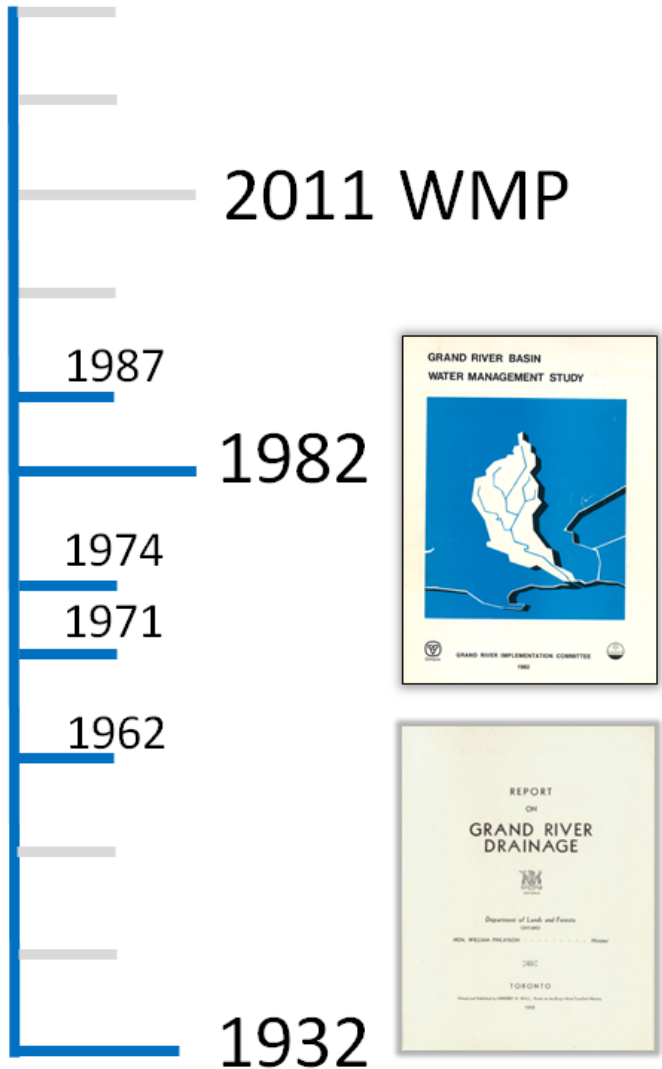
- Some communities will grow by up to 65%

# Some Questions for the Plan

---

- **Where are we now with respect to our collective needs and aspirations around water and the river system?**
- **What will the Grand River watershed look like in 20 years, 40 years?**
- **What practical steps could we take that will move us closer to our objectives?**

# We've Always Had a Plan



- **75 year history of successful collaboration**
- **Shared responsibility required to attain local perspectives for the watershed**
- **Goal is preparedness for population growth, climate change**

# A key component of the broader Watershed Plan

- Water management plan is a key outstanding component of a broader watershed management plan
- Building on many other components
- Will feed into other program/policy processes



# Goals of the Management Plan



- **Ensure sustainable water supply for communities, economies and ecosystems**

- **Reduce flood damage potential**

- **Improve water quality to maintain river health and reduce the Grand's impact on Lake Erie**

- **Build resiliency to deal with climate change**



# Charting a Path Forward

---

- **A collaborative process leading to action**
- **Steering Committee:**
  - GRCA
  - Municipalities
  - First Nations
  - Ontario ministries
  - Federal agencies
- **Builds on existing information and new studies**



# Building on the Source Protection Program

---

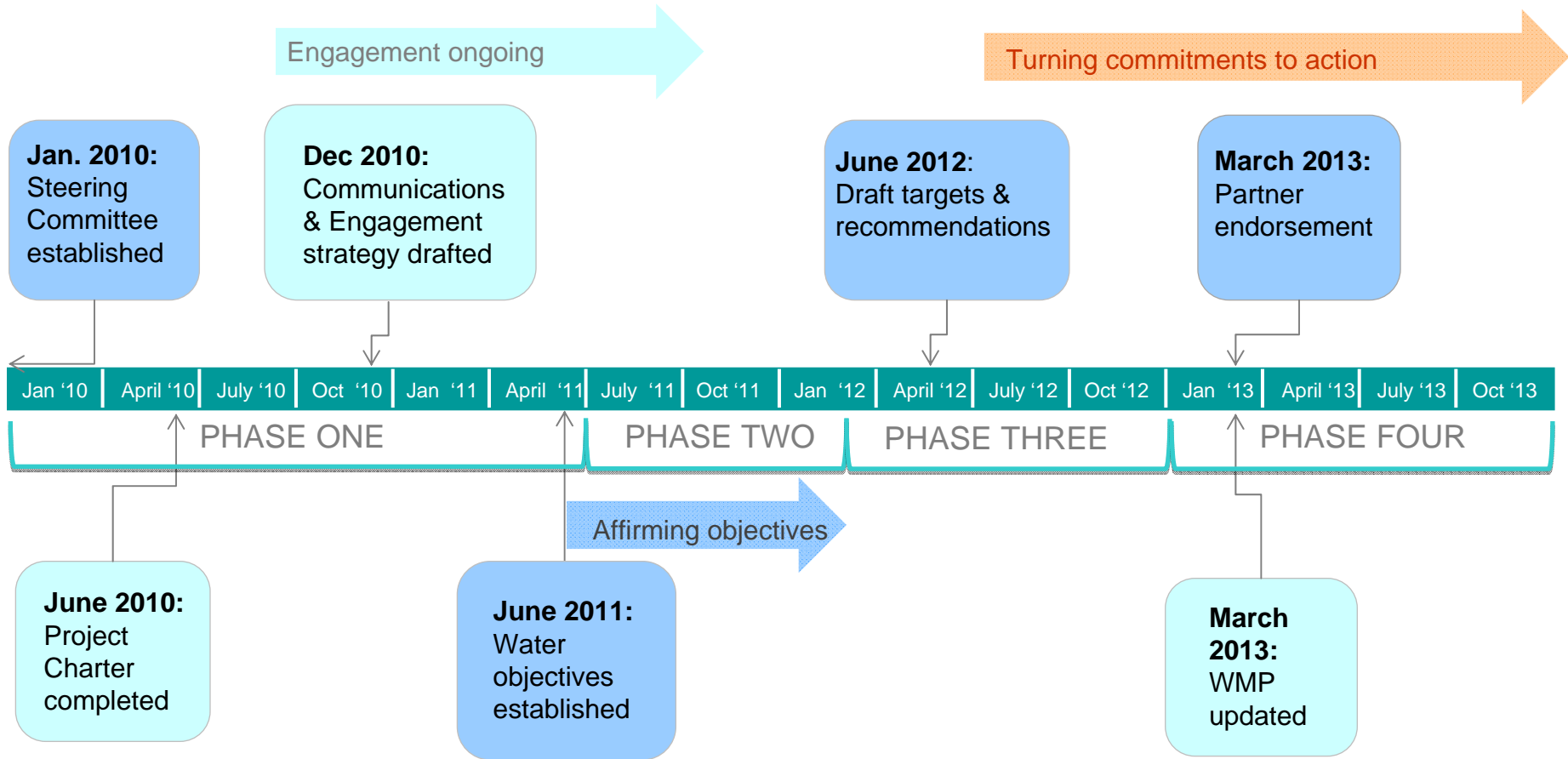
## Water Management Plan

- Goal – to improve water quality, secure water supply for all sectors, & reduce flood damages
- Proactive, collaborative plan among water management partners

## Source Protection Program

- Goal – to protect sources of municipal drinking water from contamination and depletion
- Mandated under the Clean Water Act

# Grand River WMP Timeline



- = Milestone
- = Deliverable

# Critical Success Factors

---

- Process stays collaborative
- Early Wins to celebrate
- Scope is appropriate for the available time, funding, resources, data & science
- Funding is sufficient to answer fundamental questions
- Partner organization responsible for implementation endorses the action & agrees in principal to undertake it
- Targets & measures are practical and achievable
- Rollout strategy to launch implementation
- Monitoring & performance measures recognize the time lapse to see results
- Processes to ensure continuous improvement, adaptive management, continuity