



When Everything is Significant

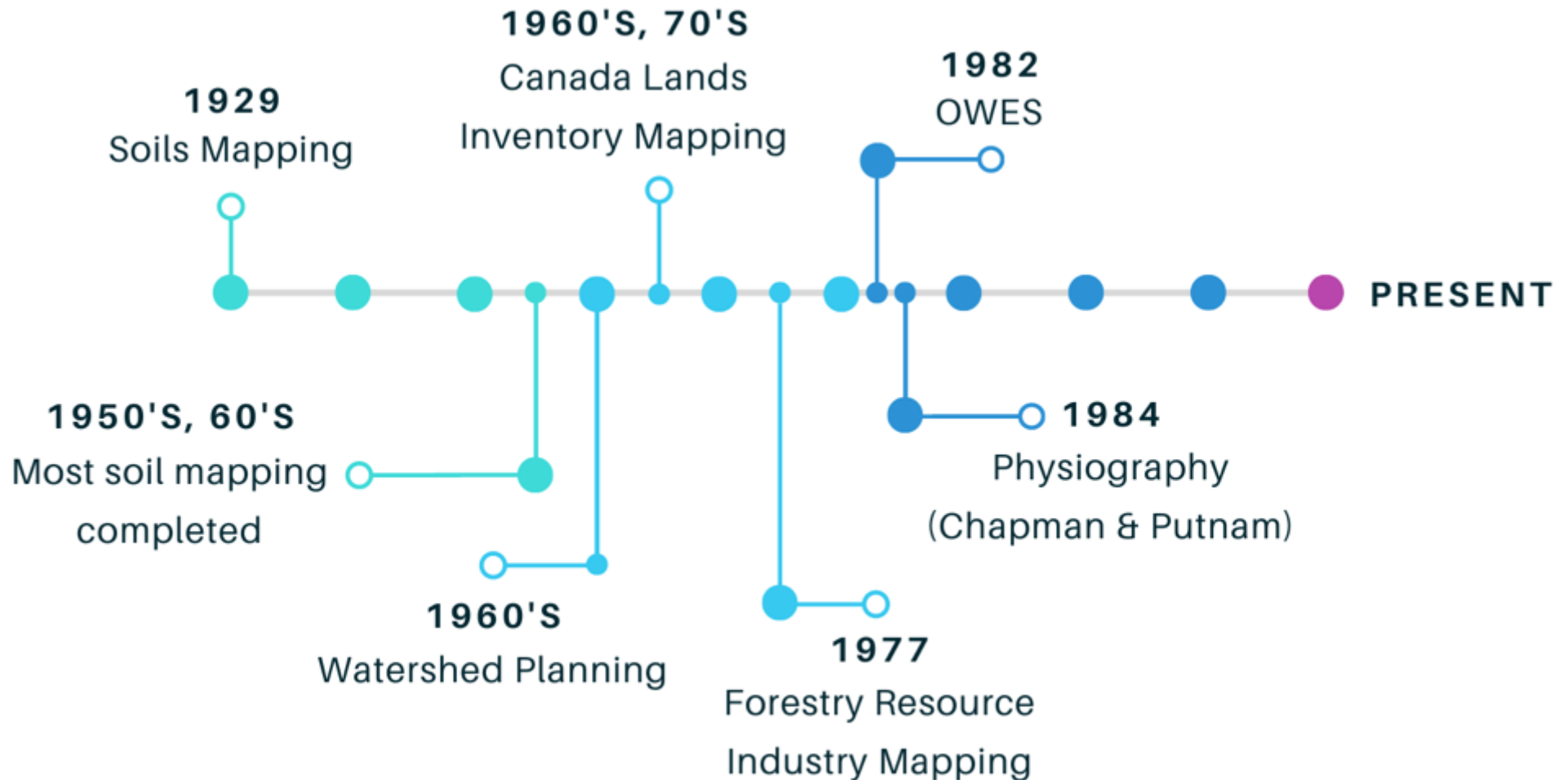
How Do We Decide What's Important?

October 18, 2022 | colucentenvironmental.com



Past, Present, Future

Natural Heritage System Planning





Where have the
naturalists gone?



Our micro-approach to NHS planning has led to the perspective that *everything* is equally significant. From pond-related relics of agricultural lands, hedgerows, and small woodlands, to seasonal and permanent successional areas. Even tiny, disturbed and created features. We've boxed ourselves in.

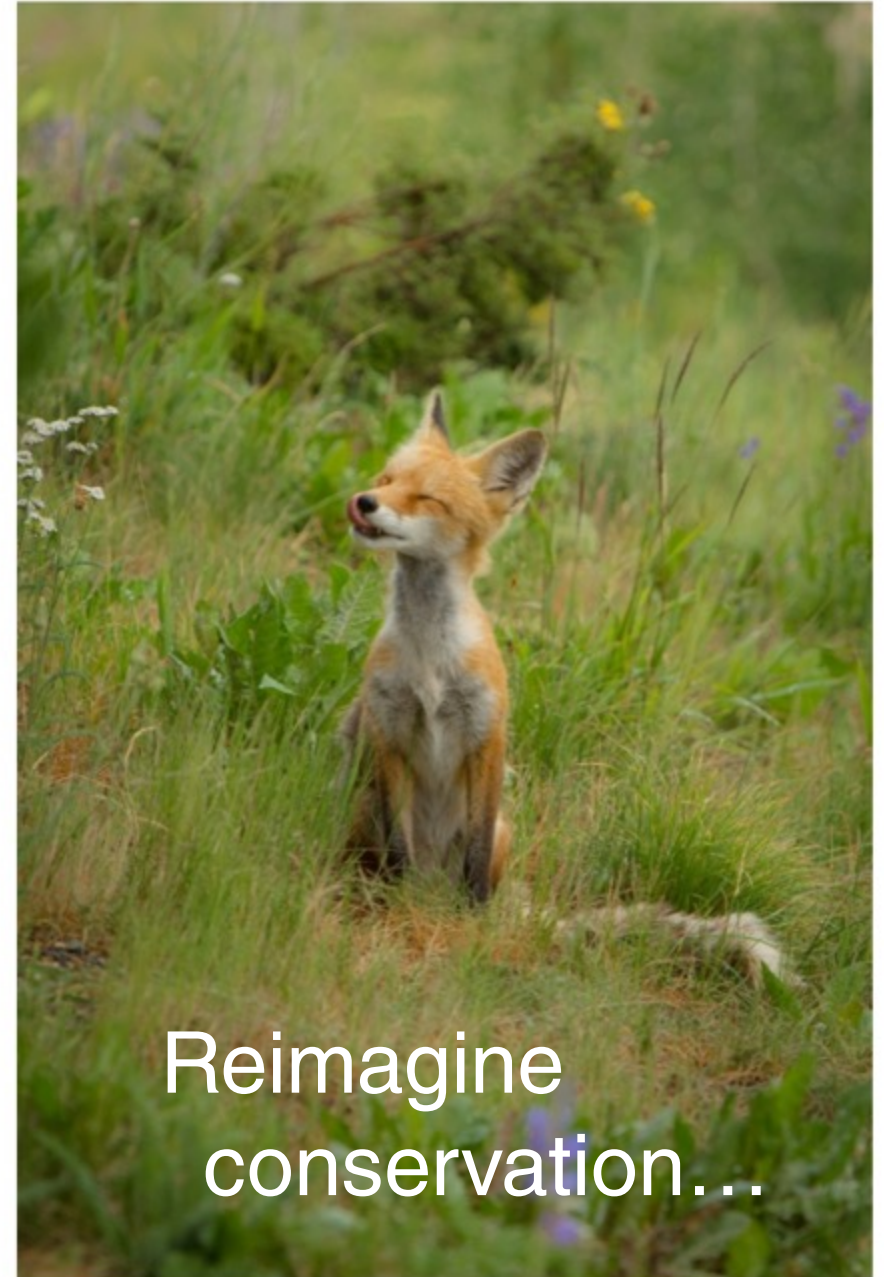
What does **reimagining** an **adaptive** approach to NHS look like?

Beyond 'no net loss'

Beyond 'no negative impact'

Outcome oriented

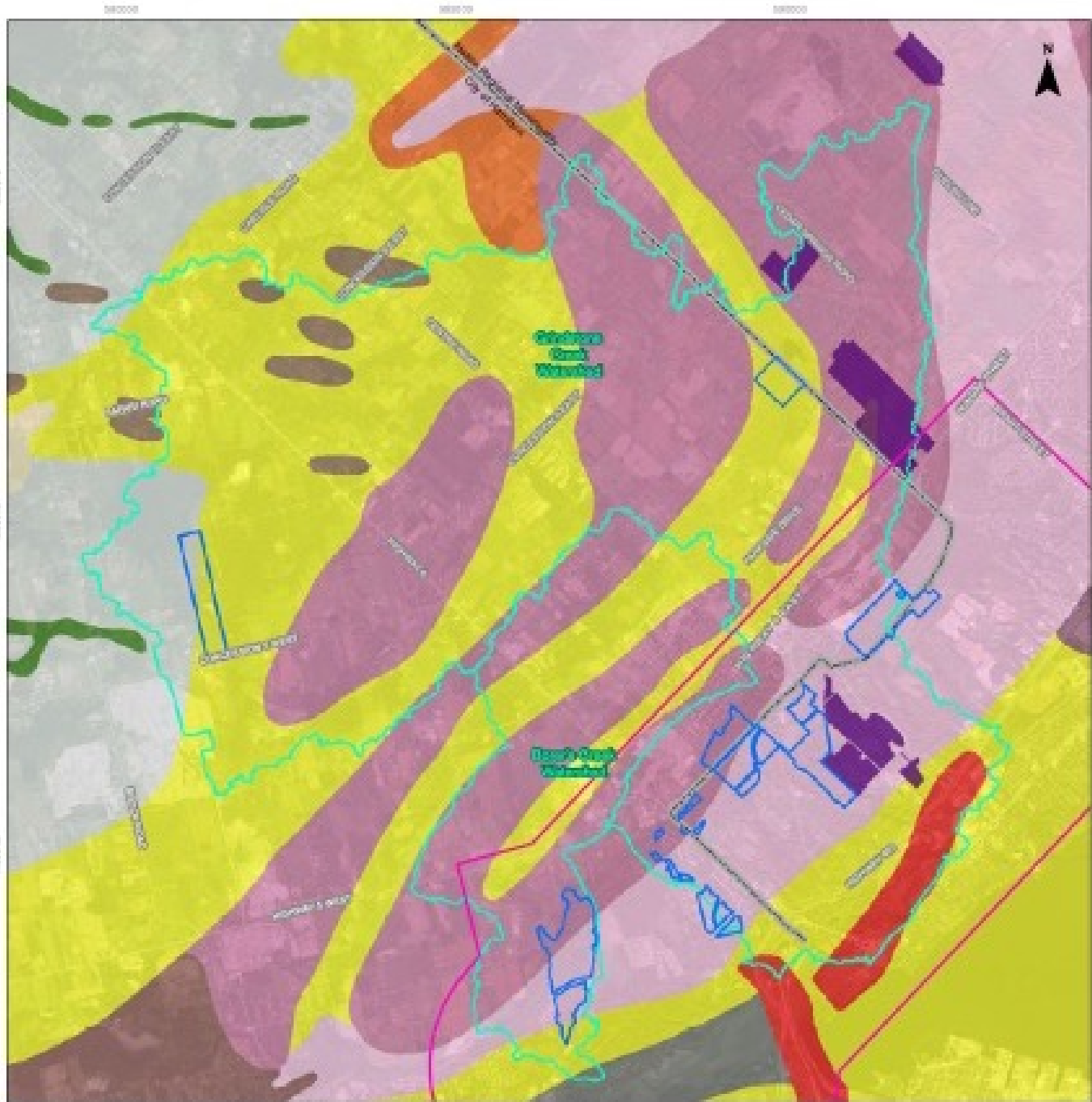
Urgency



Reimagine
conservation...

A black and white photograph of a person standing on the edge of a dark, rocky cliff. The person is silhouetted against the sky, with their arms raised. The cliff face is steep and textured. In the background, a vast, hazy landscape of rolling hills and valleys stretches out under a clear sky. The overall mood is one of solitude and adventure.

Become a **landscape**
whisperer



- Land Holdings
 - Watershed Boundary
 - Conservation Halton Land Block
 - EcoPark Study Area
- Physiographic Features (Chapman & Putnam)**
- 1: Escarpments
 - 2: Till Moraines
 - 3: Spillways
 - 4: Kame Moraines
 - 6: Till Plains (Drumlinized)
 - 7: Drumlins
 - 9: Limestone Plains
 - 10: Shale Plains
 - 11: Sand Plains
 - 13: Eskers
 - 14: Beaches
 - 17: Peat And Muck

0 1 KM

1:85,000

Contains information licensed under the Open Government License - Ontario

Base map data from Ontario Ministry of Natural Resources, Ontario GeoHub Land Information Ontario (L.I.O.) Watershed Open Data Products, <http://www.ontario.gov.on.ca/nr>

Coordinate system: NAD 1983 UTM Zone 17T

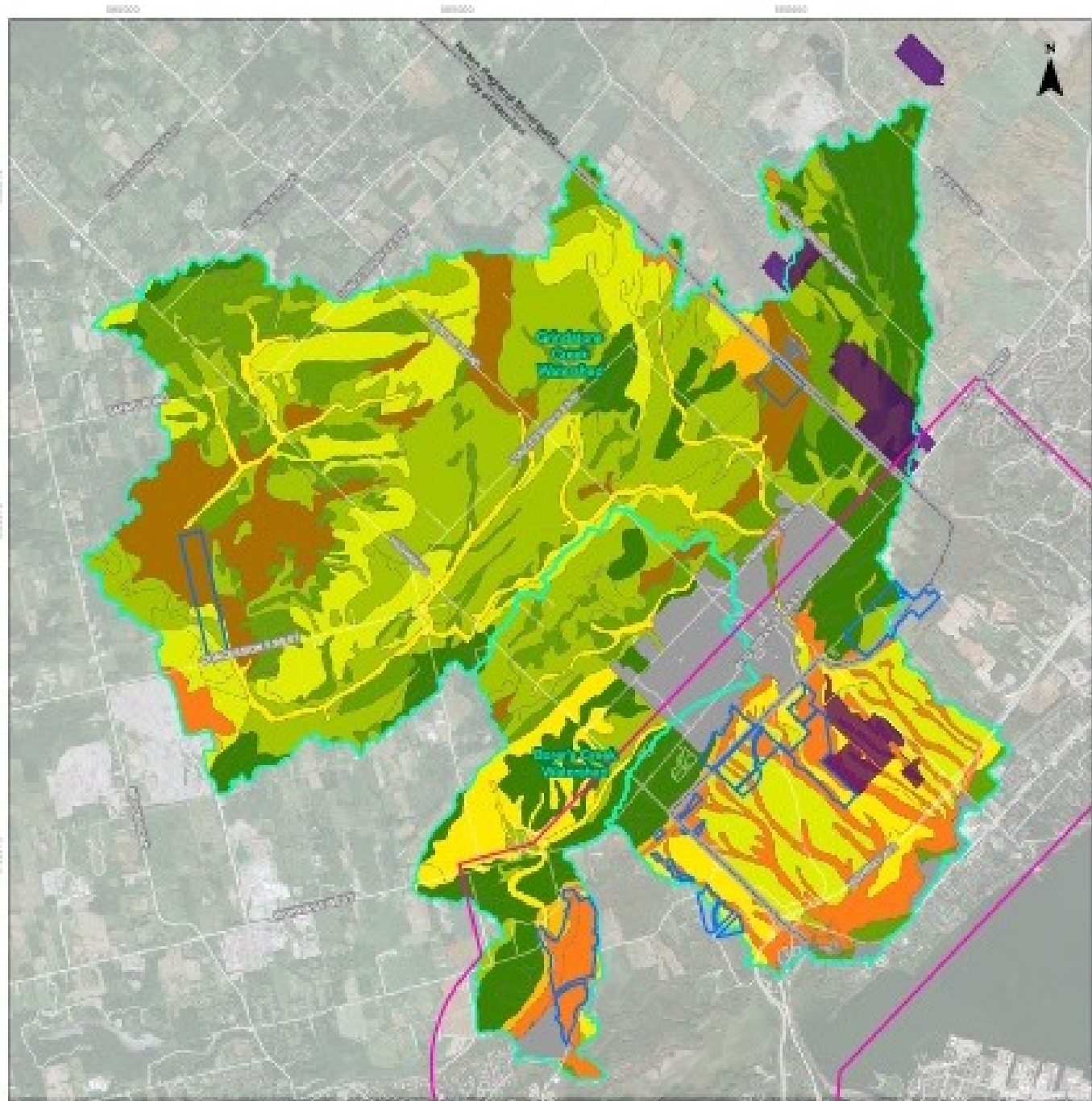
Cartography: Microsoft Visual Earth Aerial - © 2001 Microsoft Corporation © 2001 Esri Inc. ESRI 2002 11 Distribution: ArcGIS 2002

Physiographic Features

**Grindstone Creek
Conservation Project**

Penta Properties Inc.





- Land Holdings
- Watershed Boundary
- Conservation Halton Land Block
- EcoPark Study Area

Canada Land Inventory

- Class 1
- Class 2
- Class 3
- Class 4
- Class 5
- Class 6
- Class 7
- Organic
- Urban Area/Not Mapped

0 1 km

1:85,000

Contains information licensed under the Open Government License
 -- Details

Base map data from Ontario Ministry of Natural Resources, Ontario
 GeoHub/Land Information Ontario (LIO) Warehouse Open Data Products
<https://geo.ontario.gov.on.ca/>

Coordinate system: NAD 1983 UTM Zone 17E

Orthorectified: Microsoft Virtual Earth Aerial - © 2021 Microsoft
 Corporation © 2021 Intel © 2021-2022 Intel Corporation Intel v02

Canada Land Inventory

**Grindstone Creek
 Conservation Project**

Panta Properties Inc.



Think Differently

Wholistic Landscape Approach

Municipal Boundaries

Focusing too narrowly
can causes us to miss
important relationships.
E.g. Borer's Creek

Co-operation

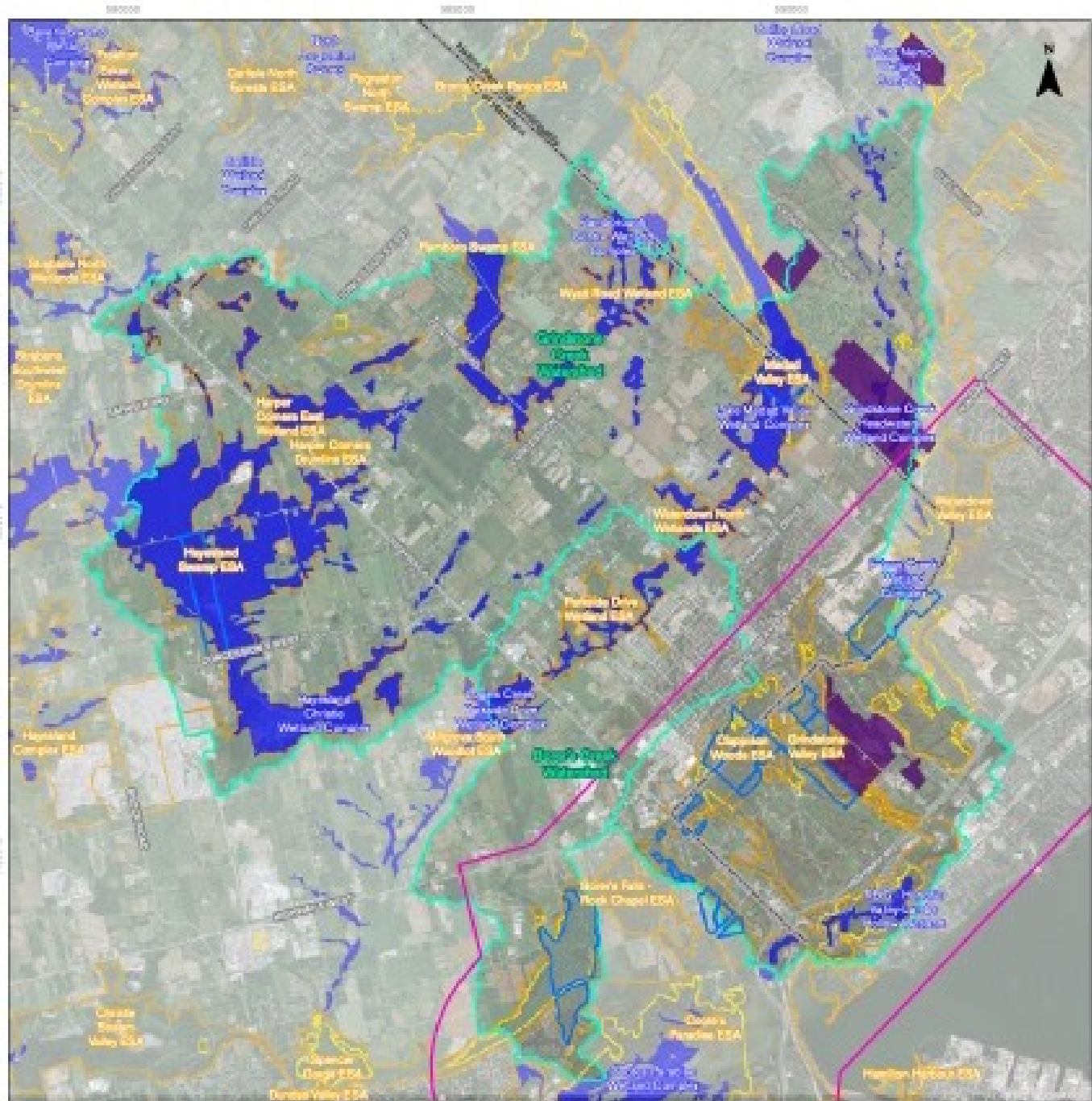
Embrace the
opportunity to share
information and ideas
more broadly.

Watersheds

Must remain mindful of
cross-terrain linkages,
including the
escarpment face.

Reposition

How are conferences
and conservation
authorities showing up?



- Land Holdings
- Watershed Boundary
- Conservation Halton Land Block
- EcoPark Study Area
- ANSI (MNR)
- ESA (MNR/City of Hamilton)
- Provincially Significant Wetland (MNR)

0 1 KM

1:85,000

Contains information licensed under the Open Government License
- Details

Base map data from Ontario Ministry of Natural Resources, Ontario
Geographic Information Systems (GIS) Warehouse Open Data Products
<http://geochunks.gov.on.ca/>

Coordinate system: NAD 1983 UTM Zone 17T

Orthoregistry Metadata: <http://www.ontario.ca/> - © 2021 Metrolinx
Copyright © 2021 Metrolinx - OC 953-00311 Distribution Allowed

Base Map

Grindstone Creek Conservation Project

Panta Properties Inc.





Investments

Refocus investments in traditional approvals processes



Energy and Resources

Release polarized efforts; Embrace accelerated landscape conservation and enhancement.



Public and Private Sectors

Imagine investing differently - requires more authentic interactions.



Front-loaded SWS Process

With earlier investments in restoration and enhancement resources, the details can come later.

A new approach to NHS



Thank **you** !