



Land Relationship Visioning: How to Incorporate First Nations Needs and Priorities in Land Use Planning

October 18th, 2022

Kassie McKeown, Technical Advisor – Indigenous Projects
Cambium Indigenous Professional Services (CIPS)

www.indigenousaware.com

CANADA'S LEADING INDIGENOUS ADVISORY CONSULTANTS

CIPS is led by experienced, Indigenous consultants serving projects that include traditional and western science approaches.



ABOUT CIPS

Land Relationship Visioning Toolkit

- Incorporates First Nation needs and priorities with western land use planning methods.



First Nations people have long since practiced multiple forms of land-use planning that benefit ecosystems as well as themselves.



Introduction of beavers to an area

- Allow for the creation of beaver marshes, a bio haven for diversity.

Aversion of over hunting and harvesting

- Don't take the first harvestable you see, never take all of what is there, use every thing you take, offer thanks.

Prescribed burning

Common practice utilized for thousands of years prior to colonization:

- provided a way to landscape the natural environment,
- created routes for travel,
- sustained wildlife and native species,
- Enhanced hunting and harvesting,
- Suppress wildfire by cleaning the undergrowth of forests (fire fuel).



PRE
COLONIZATION



- Environmental challenges we face today are product of colonialism.
 - Suppression of traditional practices.
 - Forced relocation and disconnection of land.
- Massive disruption of ecological processes.

POST COLONIZATION



- Floods, changes in animal migrations, thawing permafrost, droughts, wildfires, changing sea, snow and ice levels, changes in plant life cycles, fish spawning times, invasive flora, and fauna species introduction.
- All of these changes pose a huge threat to traditional ecological knowledge passed down through many generations.

POST COLONIZATION



- Moving towards co-governance, revisiting traditional ways such as prescribed burning.
- Attempts at positioning Indigenous communities to allow for stewardship of land.
- An increase in Indigenous engagement and consultation.
- Indigenous issues and environmental issues go hand in hand, you cannot have one without the other.

POST COLONIZATION



- Anishnaabe given the responsibility to care for the land.
- We have strayed from that path but making our way back by reconnecting to community and cultural knowledge.
- Many Indigenous people, communities, knowledge holders and elders still have the teachings and recognize that relationship and responsibility to care for the land.
- Need tools and support to identify priorities and support efforts.

**MOVING
FORWARD**

- One way to reconnect with the land is to reframe the approach we take to land use planning.
- We need to reframe this in our minds from the **use** of the land to a **relationship** with the land.



MOVING
FORWARD



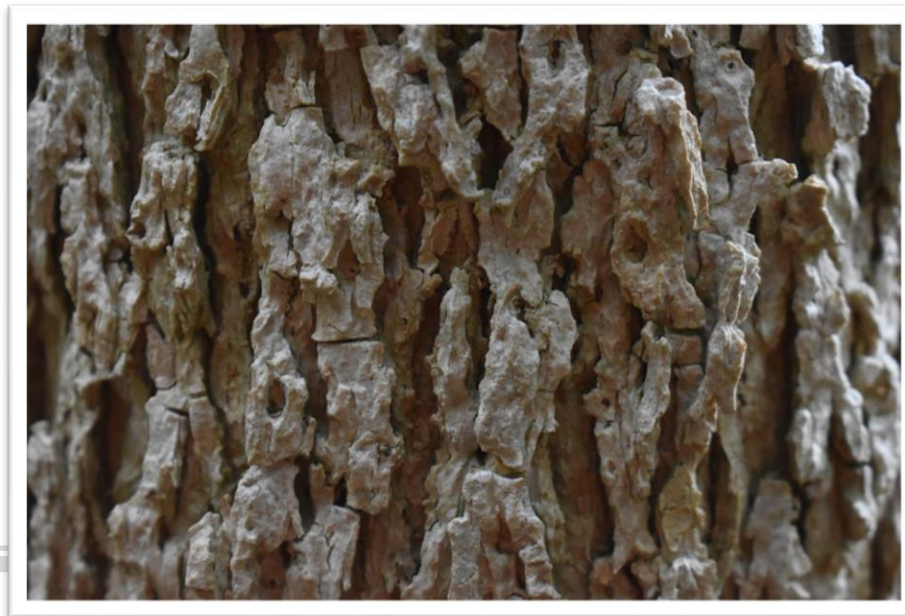
- How to use natural resources,
- Economic growth and job creation,
- Zoning,
- Municipal boundaries,
- Housing and infrastructure,
- Legislated species.

Encourages a relationship to the land, rather than a way to use the land – what does the land and water provide and how can we support that?



Focus on community specific significant spaces and species:

- Species-at-risk
- Culturally important species
- Important ecosystems and habitat within community,
- Culturally important spaces such as harvesting, hunting or ceremonial grounds.



Land Relationship Visioning Toolkit

Land Relationship Visioning

A Digital, Self-Guided Resource for First Nation Land Practitioners



Developed With Input From:



Environment and Climate Change Canada



Environnement et Changement climatique Canada

Welcome to Your Digital Toolbox!

Narrated Slide Deck
This provides the technical knowledge and support to guide your process

Engagement Ideas
Community engagement ideas to assist your information gathering and sharing processes

Document Development Tools
Integrated Microsoft Word and Excel templates to document your findings

External Resources
Links to external resources



This Toolbox is designed to support your community's effort to understand and document a Land Relationship Vision for your community

Land Relationship Visioning Modules



- 01 Understanding the Process**
What is Land Relationship Visioning and Why is it Important?
- 02 Understanding Natural Heritage Inventories and Species of Importance**
How to complete a species inventory to guide your land relationship vision.
- 03 Understanding Spaces of Importance**
How to identify and document key habitats and other important spaces within your community.
- 04 Mapping Natural Heritage Features and Important Habitat**
The importance of and different methods of mapping as a planning tool.
- 05 Using Your Vision to Guide Community Decisions**
Using the land relationship vision to guide community based development decisions and processes. How to develop and implement a land vision assessment report.

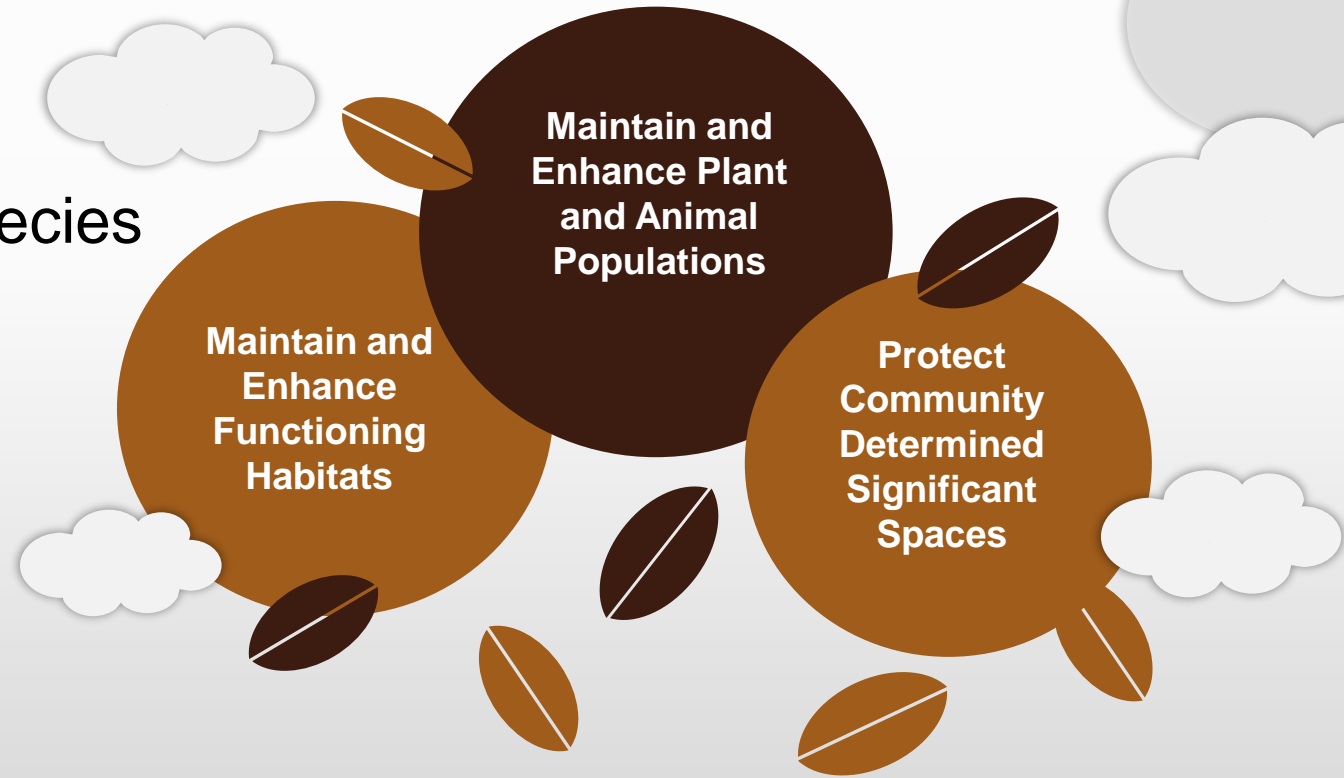


What Is Land Relationship Visioning?

Land Relationship Visioning:

- multi-process
- community driven
- identify priority spaces and species
- identify protection measures

Goals:



Purpose of This Resource

Have a document ready to guide land use decisions in the community.

1

Have a documented Species at Risk Inventory in Your Community.

3

Understand where gaps are to direct future priority projects.

5

Have an understanding of key habitats in your community that need protection.

2

Have a documented inventory of other significant species and spaces specific to your community.

4

Develop community based engagement techniques to gather input and share information to inform Land Relationship Vision.

6

Land Relationship Vision and Process to Protect Significant Species and Spaces in your Community



Welcome To Your Digital Toolbox!

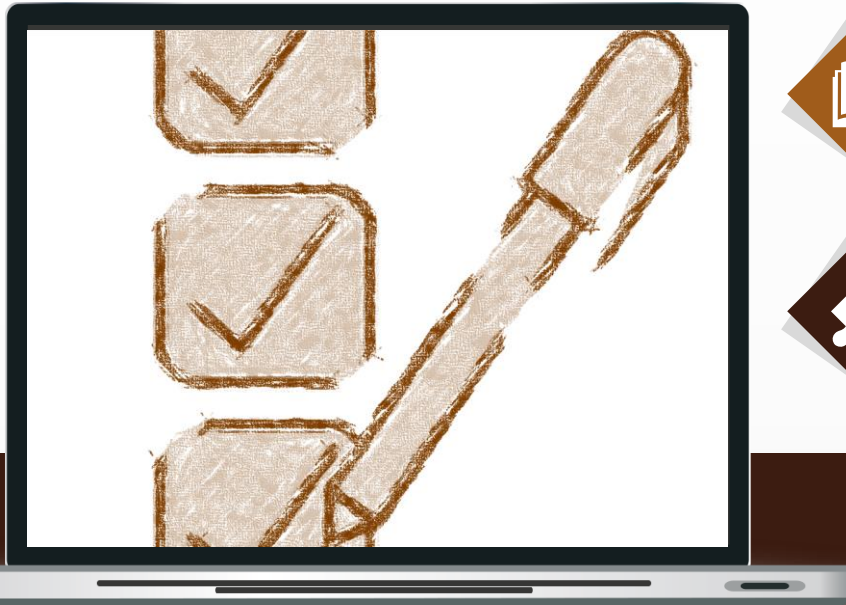
Narrated Slide Deck

This provides the technical knowledge and support to guide your process



Engagement Ideas

Community engagement ideas to assist your information gathering and sharing processes



Document Development Tools

Integrated Microsoft Word and Excel templates to document your findings



External Resources

Links to external resources



This Toolbox is designed to support your community's effort to understand and document a Land Relationship Vision for your community.

Land Relationship Visioning Modules



01

Understanding the Process

What Is Land Relationship Visioning and Why is it Important?

02

Understanding Natural Heritage Inventories and Species of Importance

How to complete a species inventory to guide your land relationship vision.

03

Understanding Spaces of Importance

How to identify and document key habitats and other important spaces within your community.

04

Mapping Natural Heritage Features

The importance of and different methods of mapping as a planning tool.

05

Using Your Vision to Guide Community Decisions

Using the land relationship vision to guide community based development decisions and processes. How to develop and implement a land vision assessment report.

Understanding the Land Relationship Visioning Process

What is Land Relationship Visioning and Why is it Important?

Why is Land Relationship Visioning Important?

Reconnect, Maintain or Enhance Relationship

Can ensure that ecosystems are connected by providing corridors and reproductive areas for wildlife, aiding species in migration and adaptation.

Land Use and Community Planning

The goal is to maintain or even enhance functioning habitats, plant and animal populations, and other significant spaces within your community.

Gives Power to Community

Can help communities to get ahead of industrial development pressures and control environment based decisions for the community.

Future Generations

Land Relationship Visioning ensures lands, waters and culturally significant knowledges are cared for now and for the generations to come.



Practitioner's Digital Toolset #1:

Important Digital Resources to Build Knowledge and Capacity




Go to your digital package and you will find the following supporting digital tool:

- **Tab 1: Table of Resources**

These resources will provide your community with the beginning of an excellent resource library.

A10 Canada Wildlife Act



Digital Toolset #1 Table of Resources

Title (online link embedded in title)	Type	Year	Description	Source
Best Practice Guide for Natural Heritage Systems Planning	Best Practice Guide	2014	The Best Practices Guide to Natural Heritage Systems Planning is a resource designed for municipal planners. It provides leading examples of natural heritage systems policies in approved, adopted or draft municipal Official Plans from across southern and eastern Ontario, highlighting the good work that municipalities are undertaking to identify, preserve, enhance and restore natural heritage systems	Ontario Nature
Breeding Bird Atlas	Tool and Resource	2021	Breeding Bird Atlas maps are useful to show the ranges of many species.	Birds Canada
Canada Wildlife Act	Policy and Legislation	1985	This Act allows for the creation, management and protection of wildlife areas for wildlife research activities, or for conservation or interpretation of wildlife.	Government of Canada
Canadian Environmental Protection Act	Policy and Legislation	1999	This Act respects pollution prevention and the protection of the environment and human health in order to contribute to sustainable development.	Government of Canada
Committee On the Status of Endangered Wildlife In Canada	Website Resource		COSEWIC was created in 1977 and in 2003 became the advisory body to SARA. Wildlife species that have been designated by COSEWIC may then qualify for legal protection and recovery under SARA. COSEWIC assessments do not take political, social or economic factors into account. COSEWIC does have an Aboriginal Traditional Knowledge sub-committee	Scientific Committee
Credit Valley Conservation Ecological Buffer Guideline Review	Guideline	2012	This report serves as a guideline when implementing ecological buffer zones. A review of current scientific and technical literature and a review of current practices in southern Ontario related to ecological buffers are contained within.	Beacon Environmental
Critical Habitat Identification Toolbox	Tool	2016	Species at Risk Act Implementation Guidance for Recovery Practitioners, this resource is a technical guide for identifying critical habitat. This can help with general habitat identification guidance.	Government of Canada
Endangered Species Act (ESA)	Policy and Legislation	2007	The Endangered Species Act sets out timelines in the law for producing strategies and plans to recover at-risk species. Includes tools to help reduce the impact of	Government of Ontario

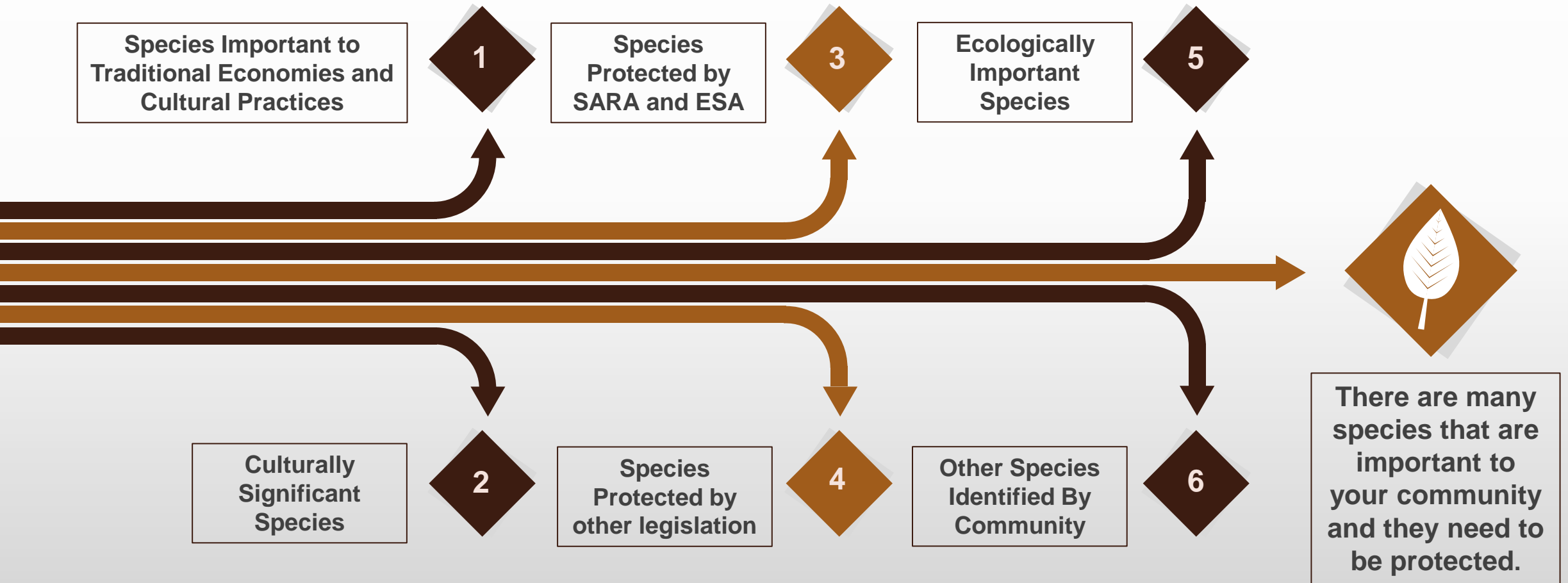
Ready | Welcome To Your Digital Toolkit | #1 - Table of Resources | #2a SAR Designations | #2b Cultural Species | #3a Cultu ... | Display Settings | 60%

Understanding Natural Heritage Inventories and Species of Importance

How to complete a species inventory.

Identifying Species at Risk

Community Based Species of Interest



Practitioner's Toolset #2:

Tools to Complete Species Inventory



In your digital package you will find the following supporting digital tools:

- Excel Spreadsheets to document Important Species including:
 - **Tab 2a: SARA Designations,**
 - **Tab 2b: Cultural Species**

These resources will allow you to efficiently develop a species inventory for your community.



Digital Toolset #2a

Species at Risk in Your Community

(Listed as of May 2021)

Common Name	Scientific Name	SARA Designation	Sara Schedule	Taxonomy Group	Possible, Probable, Confirmed, Historical
Acadian Flycatcher	<i>Empidonax virescens</i>	Endangered	Schedule 1	Bird	
Allegheny Mountain Dusky Salamander	<i>Desmognathus ochrophaeus</i>	Endangered	Schedule 1	Amphibian	
American Badger <i>jacksoni</i> subspecies	<i>Taxidea taxus jacksoni</i>	Endangered	Schedule 1	Mammal	
American Badger <i>taxus</i> subspecies	<i>Taxidea taxus taxus</i>	Special Concern	Schedule 1	Mammal	
American Burying Beetle	<i>Nicrophorus americanus</i>	Extirpated	Schedule 1	Insect	
American Chestnut	<i>Castanea dentata</i>	Endangered	Schedule 1	Plant	
American Columbo	<i>Frasera caroliniensis</i>	Endangered	Schedule 1	Plant	
American Ginseng	<i>Panax quinquefolius</i>	Endangered	Schedule 1	Plant	
American Hart's-tongue Fern	<i>Asplenium scolopendrium</i> var. <i>americanum</i>	Special Concern	Schedule 1	Plant	
American Water-willow	<i>Justicia americana</i>	Threatened	Schedule 1	Plant	
Aweme Borer	<i>Papaipema aweme</i>	Endangered	Schedule 1	Insect	
Bank Swallow	<i>Riparia riparia</i>	Threatened	Schedule 1	Bird	
Barn Owl	<i>Tyto alba</i>	Endangered	Schedule 1	Bird	
Barn Swallow	<i>Hirundo rustica</i>	Threatened	Schedule 1	Bird	
Bashful Bulrush	<i>Trichophorum planifolium</i>	Endangered	Schedule 1	Plant	
Bent Spike-rush	<i>Eleocharis geniculata</i>	Endangered	Schedule 1	Plant	

Understanding Natural Heritage Features and Important Spaces

How to identify and document Natural Heritage Features and other important spaces within your community.

Documenting Important Spaces

Identify Important Spaces Using Species Inventory Table

Review your Species Inventory Table to determine what habitats are important to key species and your community.

Confirm Cultural Significance and Privacy

Confirm any spaces that may not be key habitats, but are culturally important areas that require protection. Also, it may be in the best interest of the species and your community to keep certain locations private, such as endangered plants and animals known to be collected and sold – these needs should be identified as well.

Begin to Consider Acceptable Protection Measures

Work with community leaders, youth, elders and knowledge holders to begin to determine what would be acceptable protection measures to you community for important species and spaces.



Practitioners Toolset #3:

Tools To Document Community Habitats



In your digital package you will find the following supporting digital tools:

- **Tab 3a: Cultural Spaces**
- **Tab 3b: Habitat Identification**

These resources will allow you to efficiently document the important habitats and spaces in your community.



Digital Toolset #3a Documenting Cultural Spaces

Space	Location	Description	Cultural Relevance	Additional Information
		cedar thicket	medicine harvested for ceremony	



Digital Toolset #3b Habitat Identification

	A	B	C	D	E	F	G	H	I	J	
1		Digital Toolset #3b Habitat Identification									
2		Digital Toolset #3b Habitat Identification									
3		Digital Toolset #3b Habitat Identification									
4		Digital Toolset #3b Habitat Identification									
5	Habitat Type	Location in Community	Species Present	Significance of Habitat	Threats	Future Actions					
6	<i>Wetland</i>	<i>East Side of Side Road #12</i>	<i>Chorus Frog (SARA), Blanding Turtles (SARA) other frogs, other turtles, snakes, birds, frogs, cedar, dogwood</i>	<i>SAR and cultural species</i>	<i>Development, Drought, Invasive Species</i>	<i>Monitor</i>	<i>Example</i>				
7											
8											
9											
10											
11											
12											
13											
14											
15											
16											
17											
18											
19											
20											
21											
22											
23											
24											
25											

Mapping Natural Heritage Features

The importance of and various methods of mapping.

Importance of Mapping

Articulate Land Based Knowledge

Can help communities articulate land based knowledge to external agencies.

Maps are Visions

Assists communities in land relationship visioning and management of important species and spaces.

Builds Capacity

Can enable communities to advocate for change and address development conflict.

Regenerates a Resurgence of Interest

The mapping process brings community members together to share their ideas and visions which can ignite a resurgence of interest in sharing knowledge between generations.



04

Practitioners Toolset #4: Methods of Mapping



Hands on Mapping

Scale Map and Image Mark Up

Geographic Information Systems (GIS)

Multi Media and Internet Based Mapping

Engagement Exercise

Facilitate Knowledge Sharing with Mapping

The mapping process can bring community members together to share their ideas and visions which can ignite a resurgence of interest in sharing knowledge between generations.



Facilitate discussions within the community

- Why is mapping important to your community?
- What sites would your community like to protect?
- Are these sites culturally significant? Do they have species at risk?



Hands on Mapping or Scale Map and Image Mark Up

- Organize a Hands on Mapping or Scale Map and Image Mark Up community event!
- Print out a large map of your community and invite members to identify significant spaces and habitats that they find valuable.
- Allow community members to mark up the map and visit with one another as they discuss the past, present and future relationship with the land.



Use the Maps as Reference

- After the session, the practitioner will have community map(s) as reference (as well as discussions) when implementing a land relationship visioning report with community priorities.

Using Your Vision to Guide Community Decisions

Developing a Land Relationship Assessment Report to guide
community based development decisions and processes

05

Practitioners Toolset #5: Report Template Document



Your digital package contains a word document template.

This template is a practical tool for writing your report.

Refer to the information within Module 5 and throughout the entire toolkit to compile a report that will aid in a Land Relationship Vision.

X First Nation Land Relationship Vision Assessment Report



Insert First Nations Community Names

Insert date

|

X First Nation X Report

Page 2 of 23

Table of Contents

1. Background.....	3
Introduction.....	3
Indigenous Knowledge.....	3
Community Vision.....	3
Your Community.....	4
2. METHODS.....	5
Who was involved in your project.....	5
Working Committee Members.....	5
Working Committee Meetings.....	5
When & How.....	6
Community Engagement Events.....	7
Technical Support & Training.....	8
Where.....	8
3. RESULTS.....	9
FINDINGS AND ANALYSIS.....	9
What we found.....	9
What we Heard.....	9
Where are the key locations.....	9
4. Conclusions & Next steps.....	10
Project KEY FINDINGS.....	10
Project reflections.....	10
Next Steps.....	10
Appendices.....	12
Appendix A: INSERT FIELD SHEETS, Maps, meeting notes, etc here.....	12

X First Nation X Report

Page 3 of 23

1. BACKGROUND

INTRODUCTION

Purpose: Why was this work completed? What is the purpose of the report?

If you have specific goals and objectives for your work list them here.

If your project has a specific focus record it here. For example, terrestrial assessment; aquatic assessment; Species at Risk assessment; bio-cultural species assessment; habitat or ecosystem assessment; and/or natural spaces of particular importance to your First Nation.

INDIGENOUS KNOWLEDGE

This section integrates Indigenous knowledge and perspectives with important species and spaces into the plan.

Ex. Explain how your values or perhaps a traditional teaching relate to responsibilities for protecting important species and spaces.

COMMUNITY VISION

Write your First Nation's Vision Statement and describe how protecting important species and spaces relates to your community's vision.

Land Relationship Visioning



- Update land use plans/community plans,
- Community wide engagement tools,
- Connect youth with the land,
- Support current initiatives (environmental monitoring, planning, organizing past and current info to identify gaps, funding applications),
- Gather TEK and share knowledge within community,
- Community BioBlitz – “Blitz Book”



A close-up photograph of a forest floor. The ground is dark and covered with a mix of green and brown pine needles, several brown pine cones, and several small, white, star-shaped mushrooms. The scene is lit with natural light, creating a textured and detailed view of the forest's undergrowth.

Miigwech!!

Kassie McKeown, Cambium Indigenous Professional Services

k.mckeown@indigenouslyaware.com

705-313-1132

www.indigenouslyaware.com