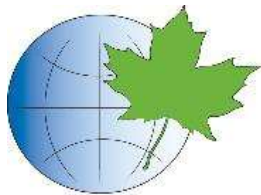


CANADA'S BIOSPHERE REGIONS

People and nature - in balance

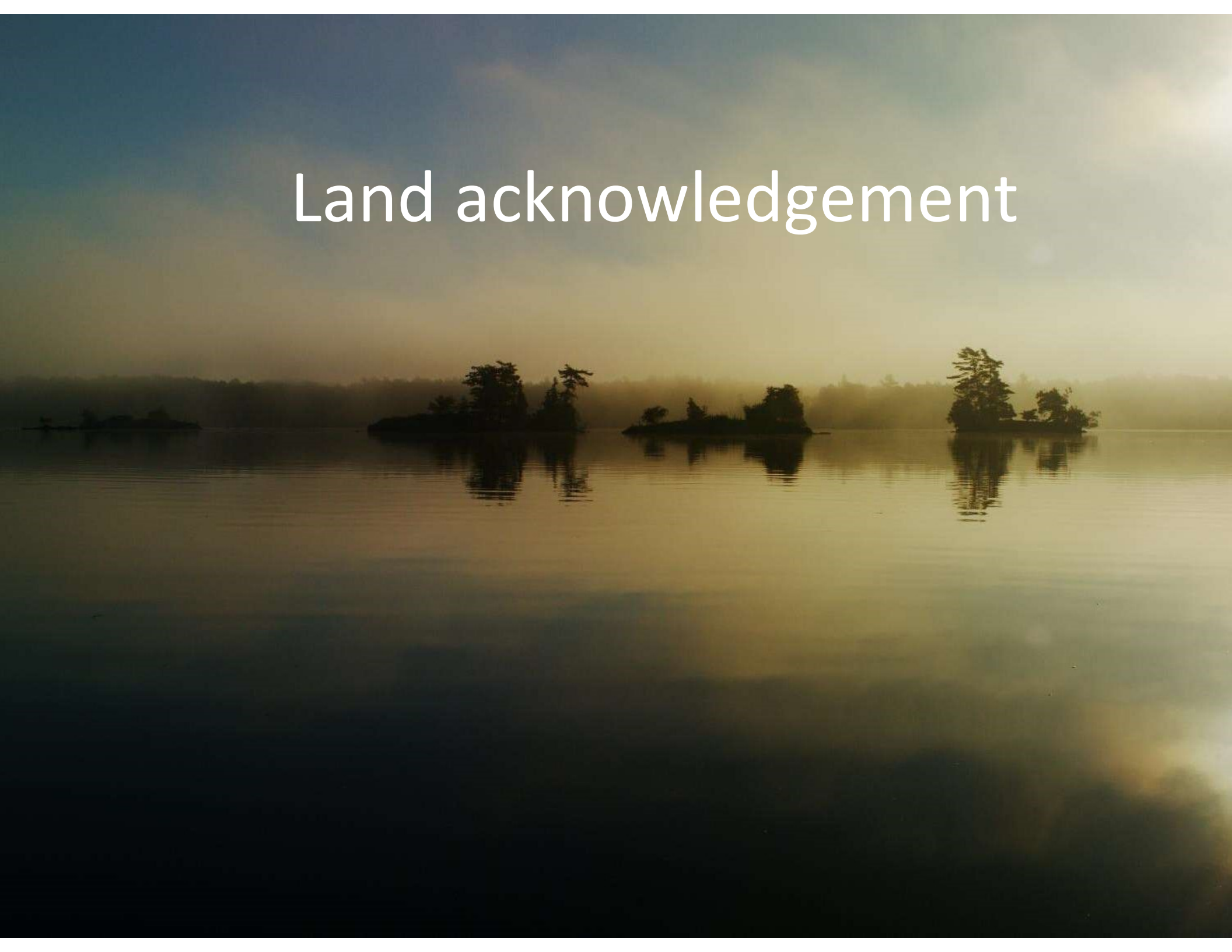


• Canadian
• Biosphere
• Reserves Association

• Association
• canadienne des
• réserves de la
• biosphère

A Discussion about Ontario's Biosphere Regions by
Kate Potter, Executive Director of the CBRA

Land acknowledgement





CBRA



- National organization
- Supports and promotes the work of Canada's 19 BRs

RESERVE VS. REGION



history



people



system approach

NATIONALLY

2M+

People live in Canada's BRs



30K

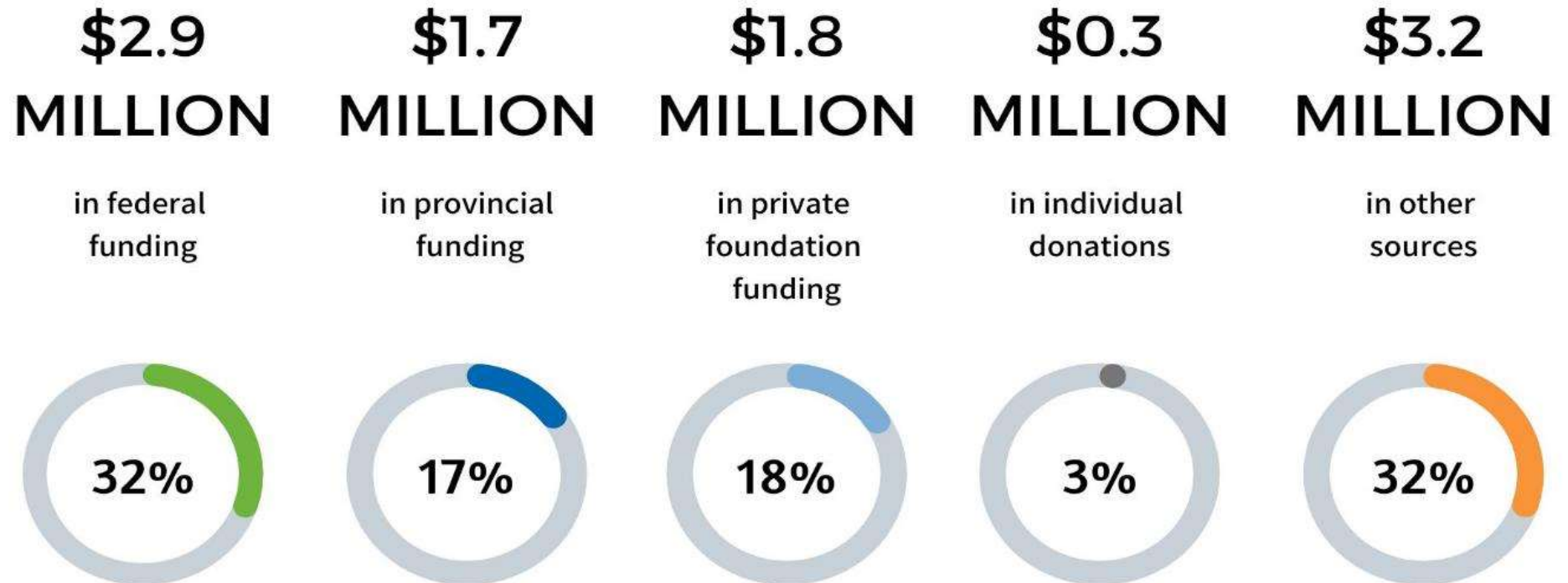
Hours are volunteered by over 1,500 people who support their local BRs



180

People are employed by BRs

FUNDING FOR BIOSPHERE REGIONS



For a total of
\$9.9 MILLION

dollars of funding per year for work in Canadian BRs

In 2022, an additional \$6 million of federal and other matching dollars was fundraised, due to an investment from the Government of Canada for biodiversity conservation work. This work and yearly contribution will continue until at least 2024.

HOW DO YOU BECOME A BR?

Grassroot community work in a spot of internationally significant biodiversity

Develop UNESCO application

UNESCO accepts application



BR SCALES

International

Convention
on Biological
Diversity

Sustainable
Development
Goals

UNESCO

Lima Action
Plan

National

CBRA and
CCUNESCO

Local

Sites, partners, Indigenous hosts

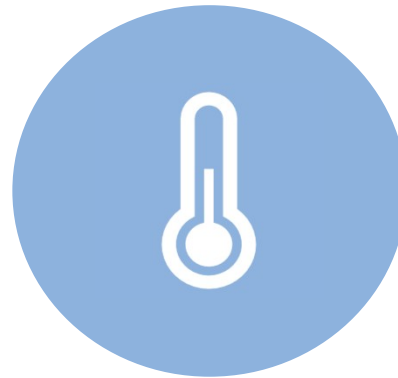
BR WORKPLAN THEMES



BIODIVERSITY
CONSERVATION



SUSTAINABLE
DEVELOPMENT



CLIMATE ACTION



RECONCILIATION

AT THE END OF THE DAY,



GLOBAL complex
problems



LOCAL solutions



BR ZONES

Core Areas

A strictly protected zone that contributes to the conservation of landscapes, ecosystems, species, and genetic variation

Buffer Zones

Surrounds or adjoins the core area(s), and is used for activities compatible with sound ecological practices that can reinforce scientific research, monitoring, training and education.

Transition Area

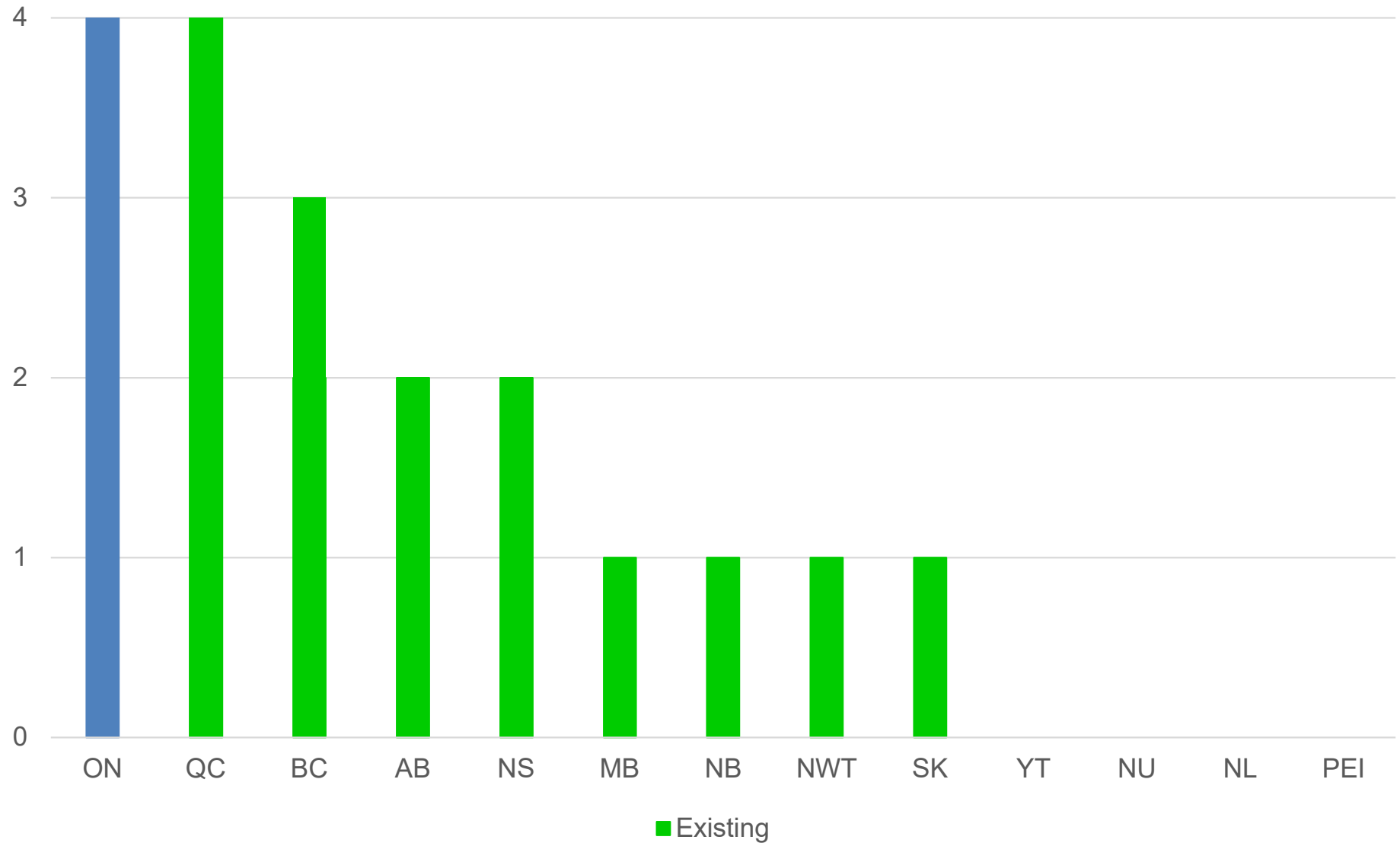
Communities foster socio-culturally and ecologically sustainable economic and human activities.



CANADIAN LOCATIONS

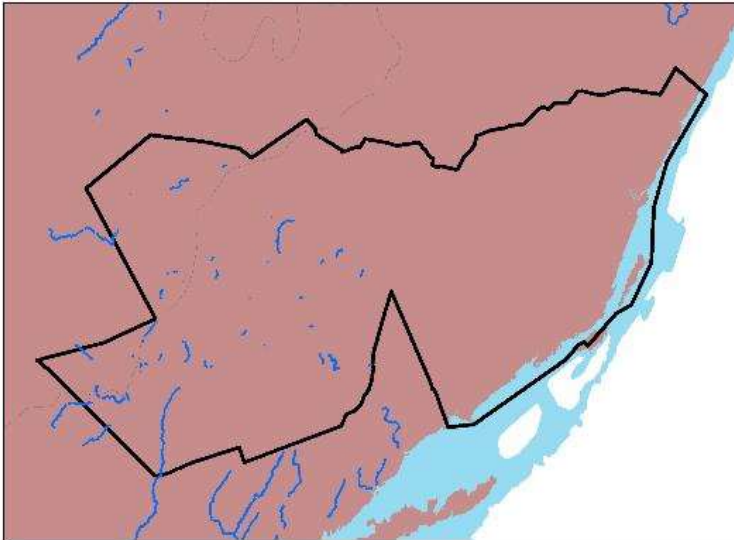


BRS BY PROVINCE/TERRITORY

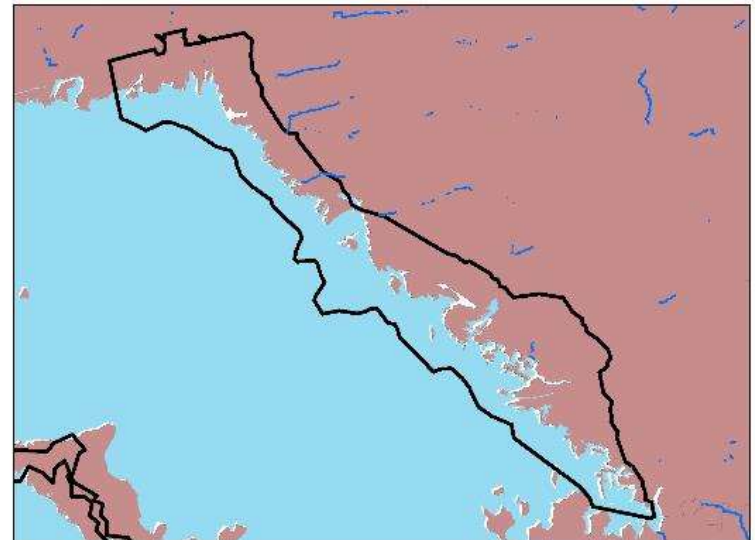


ECOZONES OF ONTARIO BR

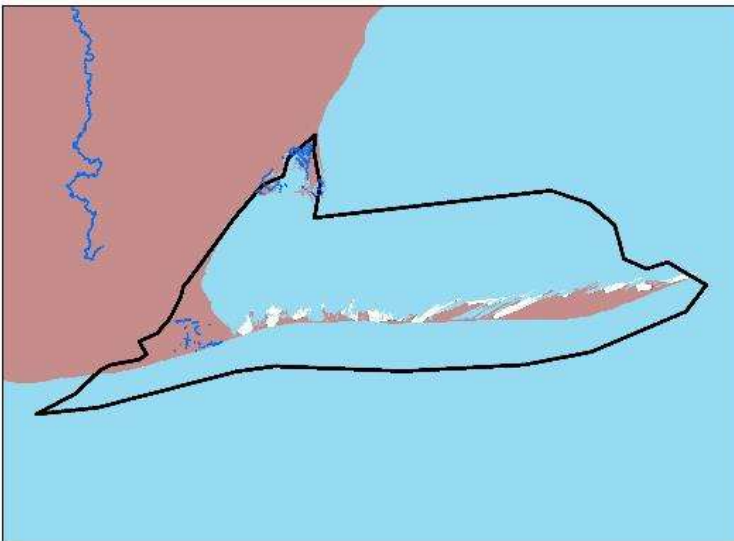
Frontenac Arch



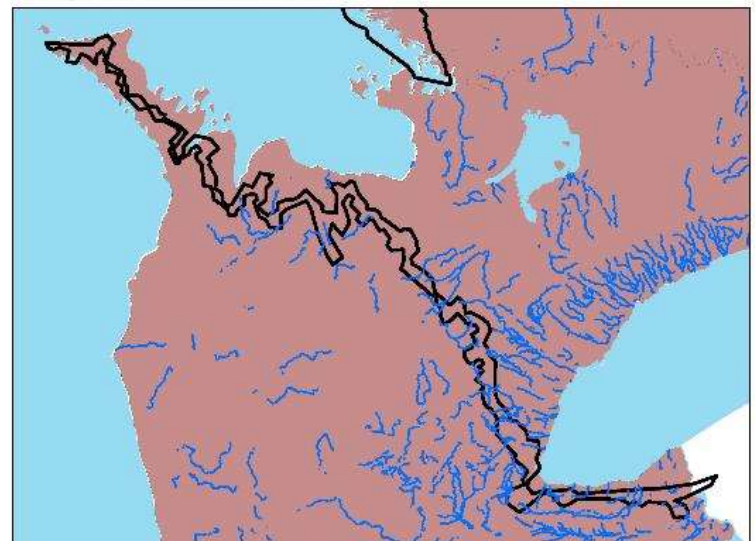
Georgian Bay



Long Point

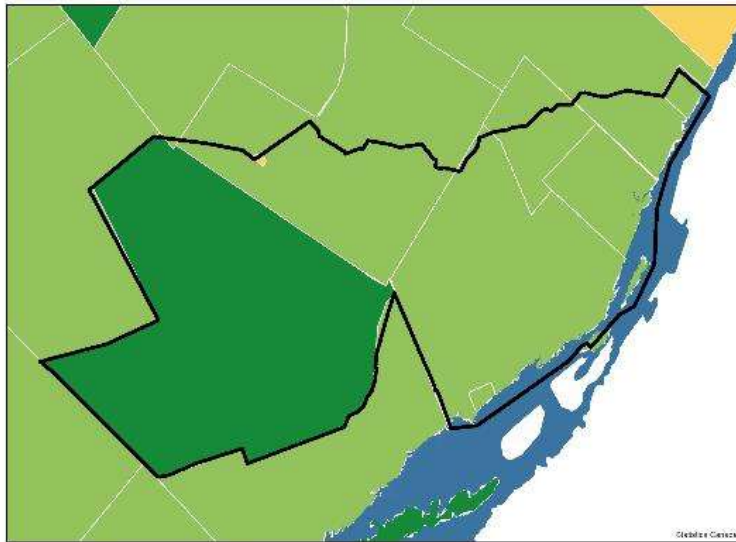


Niagara Escarpment

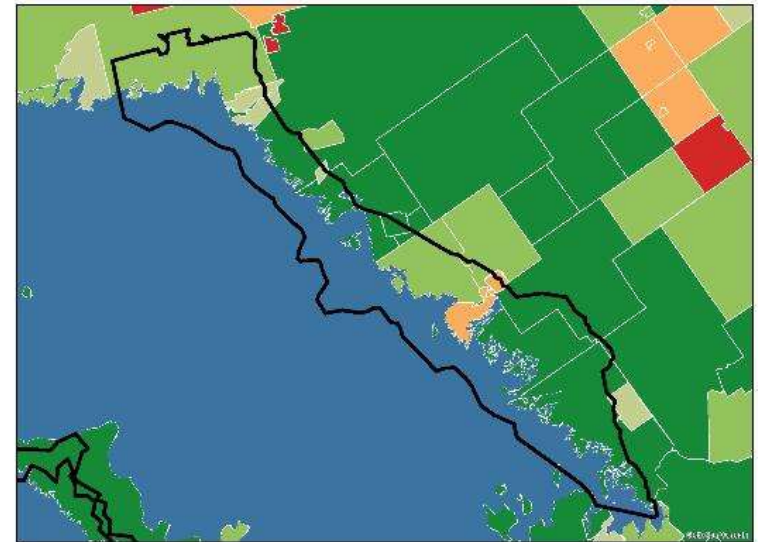


POPULATION CHANGES, 2001-2006

Frontenac Arch



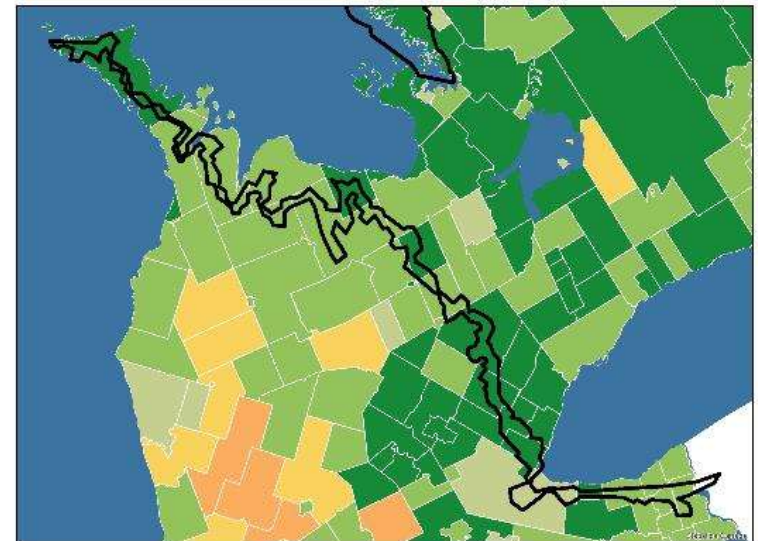
Georgian Bay



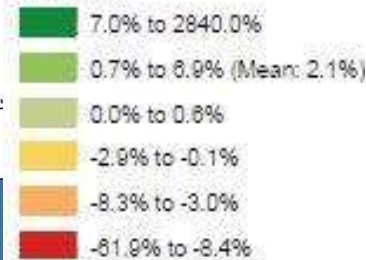
Long Point



Niagara Escarpment

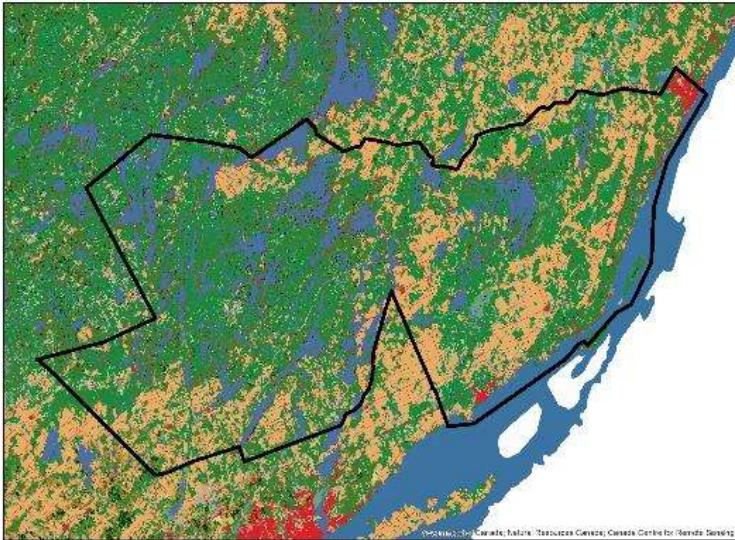


PopChg



LAND COVER

Frontenac Arch



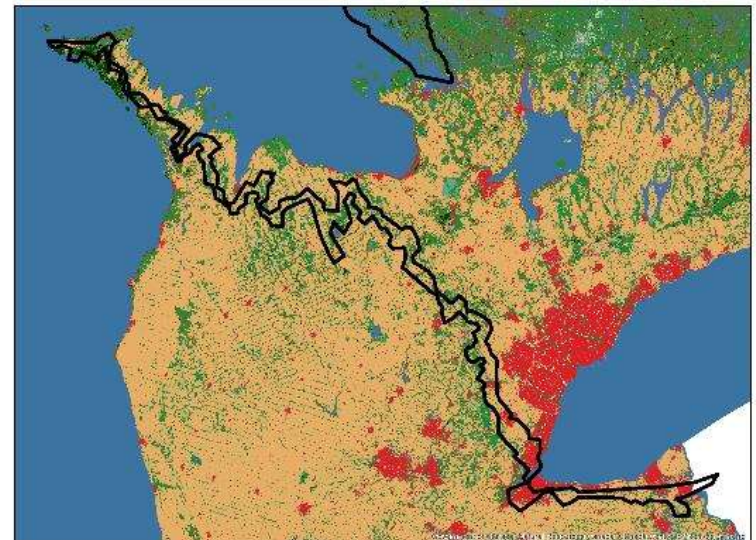
Georgian Bay



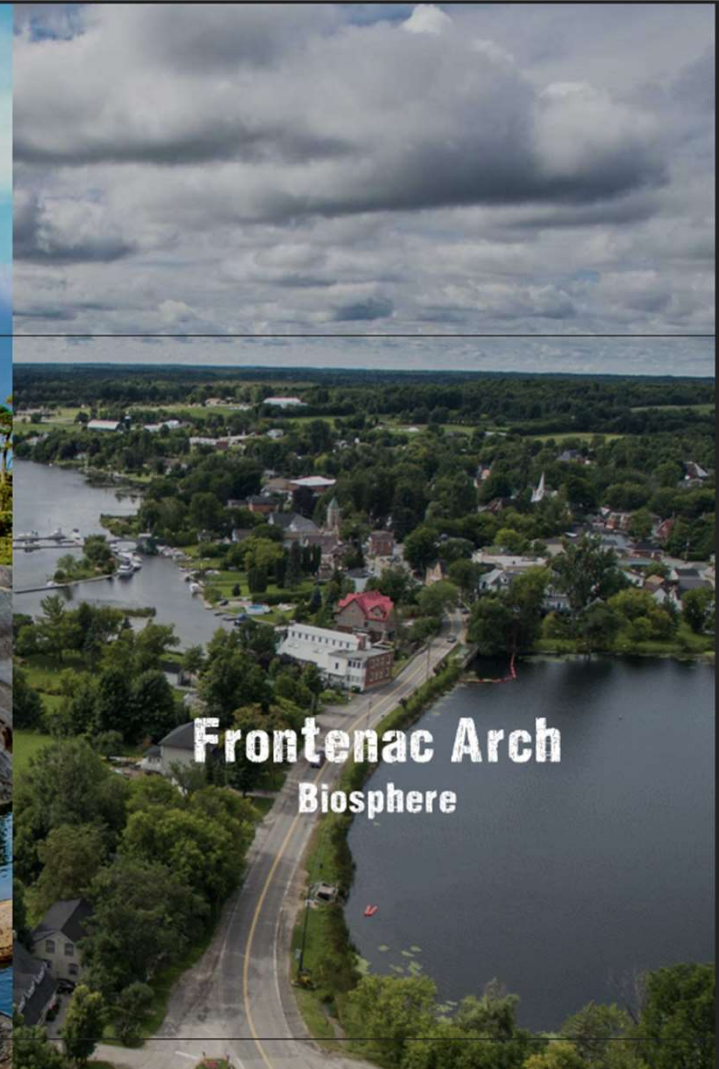
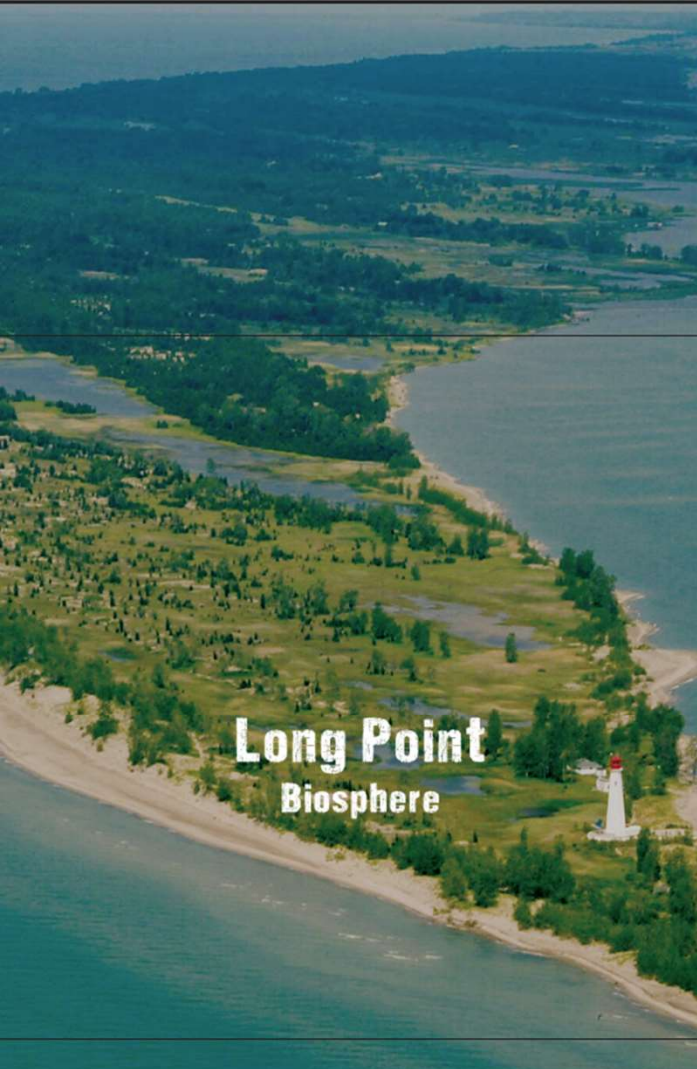
Long Point



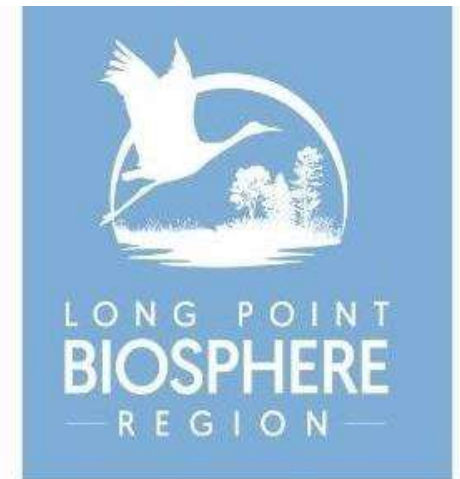
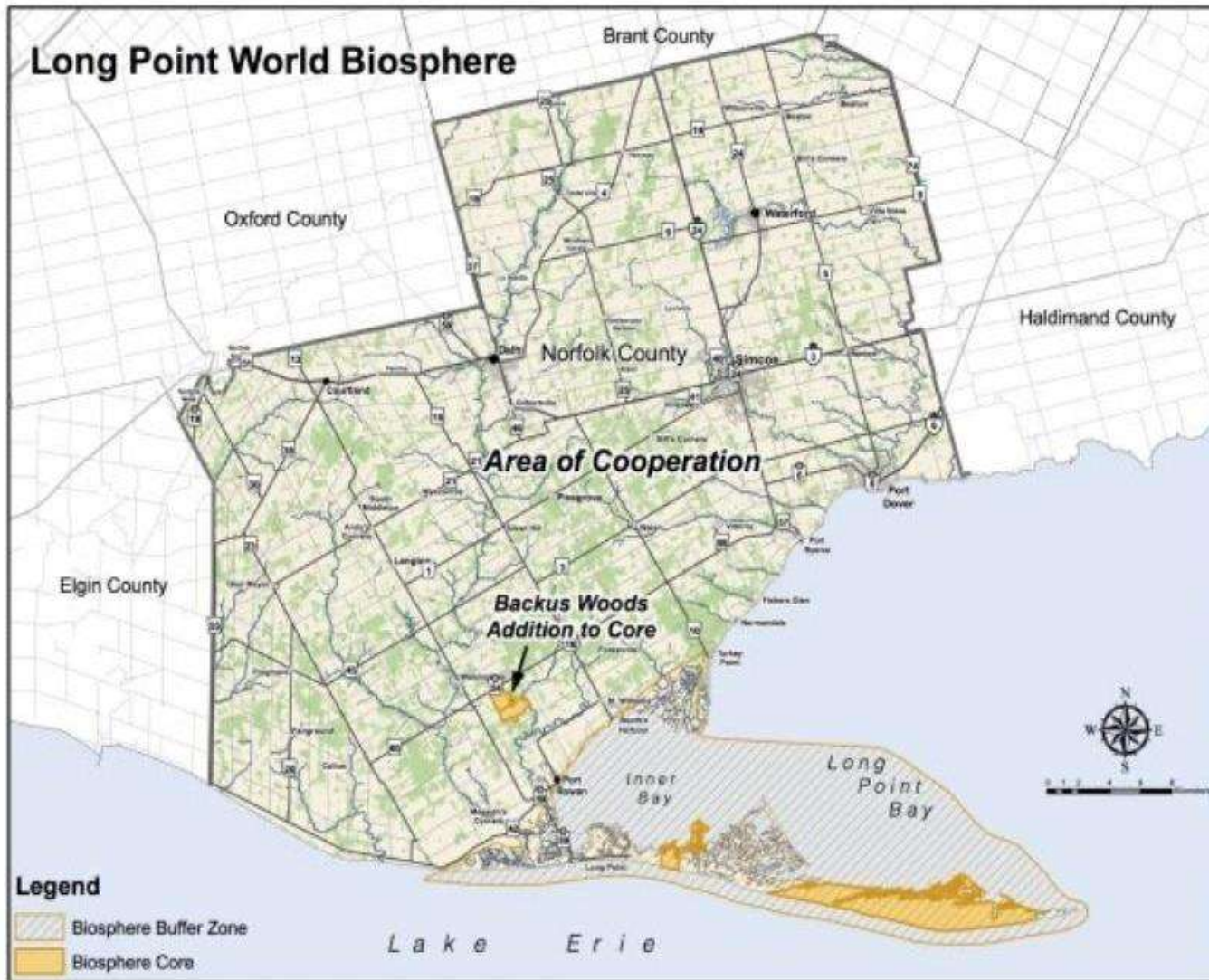
Niagara Escarpment



3/4 ONT. BR - AMAZING PLACES



LONG POINT BR



longpointbiosphere.com

LONG POINT - THE CAUSEWAY

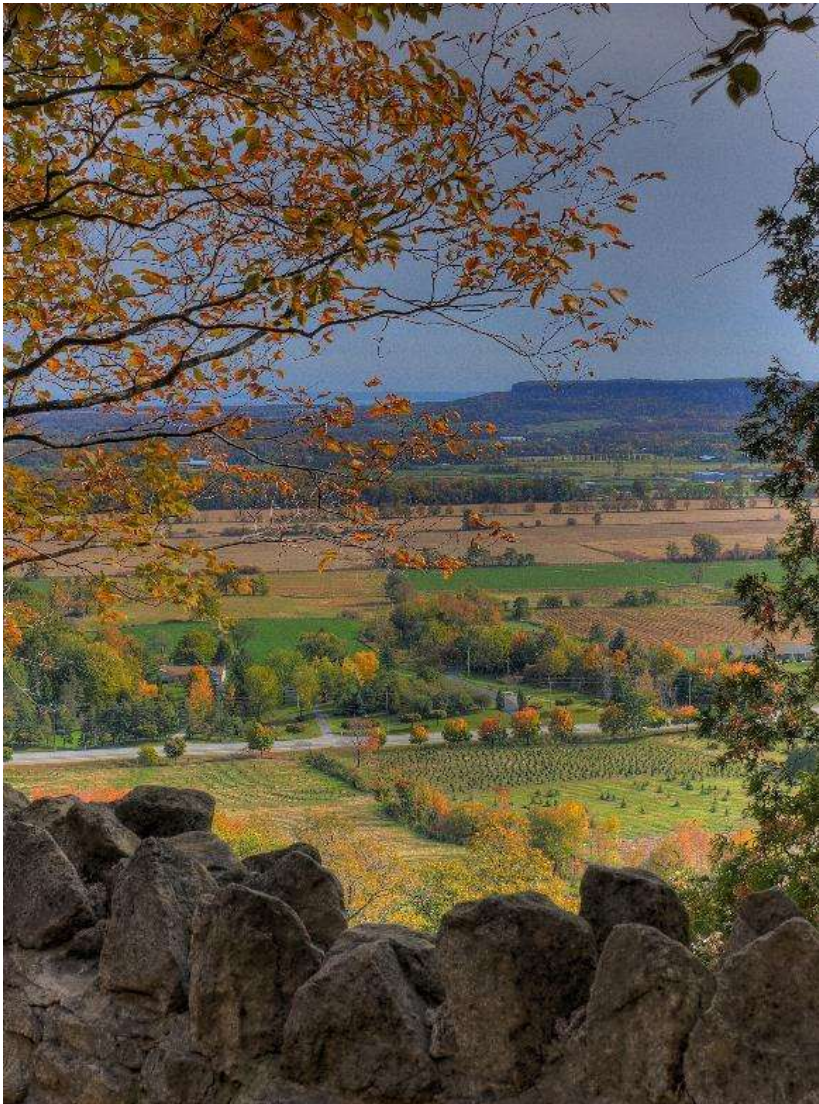
- Problem
 - Connects LP beaches to mainland
 - High wildlife mortality (10K animals per year)
 - Impedes natural hydrologic connection
- Work
 - Ecopassages and culverts
 - McMaster U. study shows dramatic reduction in fully fenced areas
 - Public education
 - 2.7 million in funding

LONG POINT - OTHER PROJECTS



- Norfolk Sustainability Leaders (with Green Economy Norfolk)
- Naturehood (with Nature Canada)
- Monitoring blocks
- Invasive species removal

NIAGARA ESCARPMENT BR



Ne
BN

**Niagara
Escarpment
Biosphere
Network**

nebnetwork.org/

NIAGARA ESCARPMENT - THE TRANSITION

- Moved to NGO model
- Indigenous co-management model
- Focus on coordinating research
- Reviewing boundaries

GEORGIAN BAY BR



**GEORGIAN BAY
BIOSPHERE**
MNIDOO GAMII

gbbr.ca/

GEORGIAN BAY – MAAMWI ANJIAKIZIWIN

- Community Nominated Priority Place -
Maamwi Anjiakiziwin (with 2 FN and a LT)
 - Knowledge generation and collective decision making
 - Co-manage priority ecosystems
 - Evaluating new strategies to reduce road threats for species at risk turtles



Maamwi Anjiakiziwin

Together • Renewal • Land • Life

GEORGIAN BAY – MAAMWI ANJIAKIZIWIN

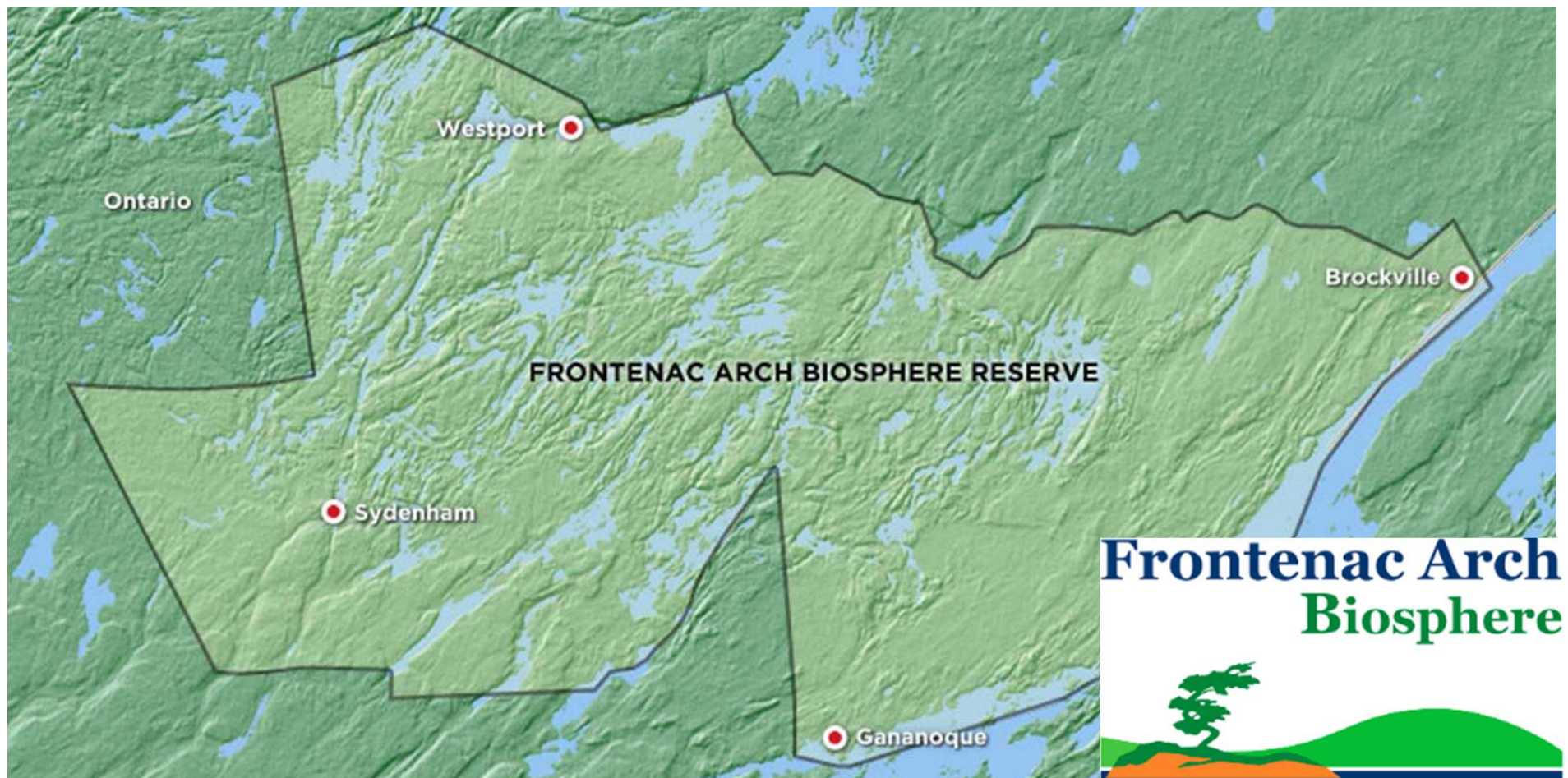


GEORGIAN BAY - ICECAP



- Collaborative corporate emissions reductions
 - Municipal Energy Management Database
 - Fleet Electrification Studies
 - Fuel Switching Studies
 - EV Charging Network
 - Regional/Backyard Compost Program
 - Housing Retrofits/Design

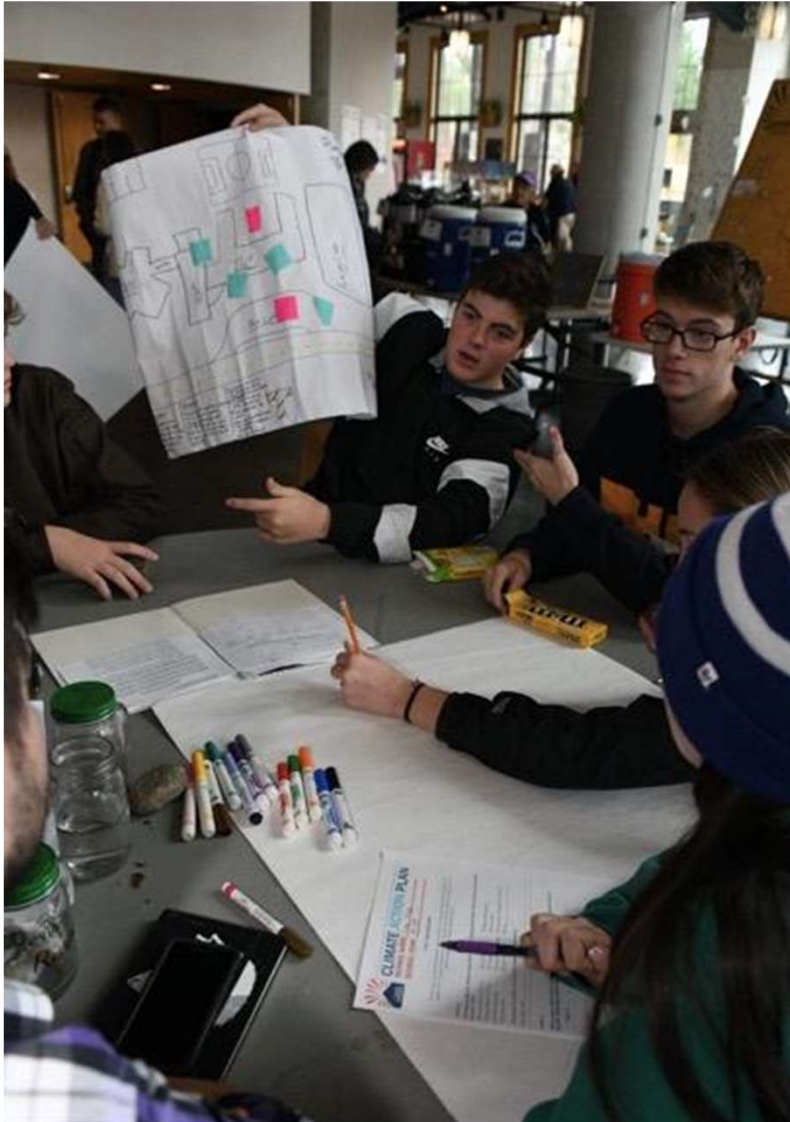
FRONTENAC ARCH BR



Frontenac Arch
Biosphere



FRONTENAC ARCH - YOUTH CLIMATE ACTION SUMMIT



- Meet climate experts
- Choose climate action workshops
- Set climate action goals/plan
- Virtual and in-person

FRONTENAC ARCH - OTHER



- FAB Experiences
- Habitat connectivity for species at risk and habitats
- Youth nature camps and forest school

CONCLUSIONS

- BRs are regions and organizations.
- BRs are convenors, bringing local partners together around a shared objective.
- They work under the same framework but have differing local implementation.
- Focus on sustainable development – people AND nature together in balance.

HOWEVER YOU GET HOME, TRAVEL SAFE



FOR MORE
INFO

[TVO Striking Balance series](#)
[2-minute national video](#)
www.biospherecanada.ca

Kate Potter

exec.director@biospherecanada.ca

905.926.2431

THANK YOU

Thanks to the BR staff and volunteers as well as the Striking Balance team for the photos used here today.