

Nature Smart Climate Solutions

Kevin Money, Director of Conservation Services



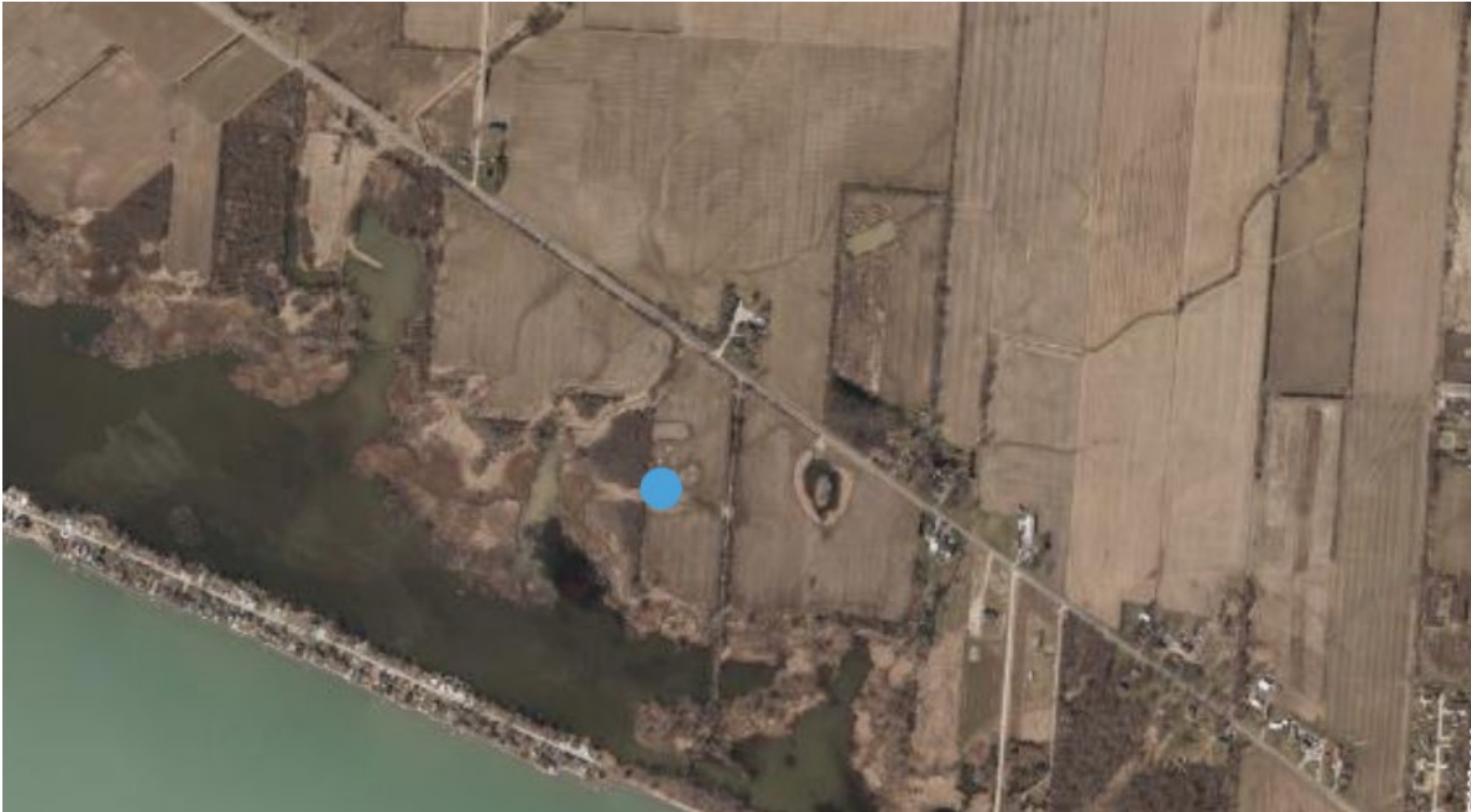
Essex Region
Conservation Authority
sustaining the place for life

Agenda

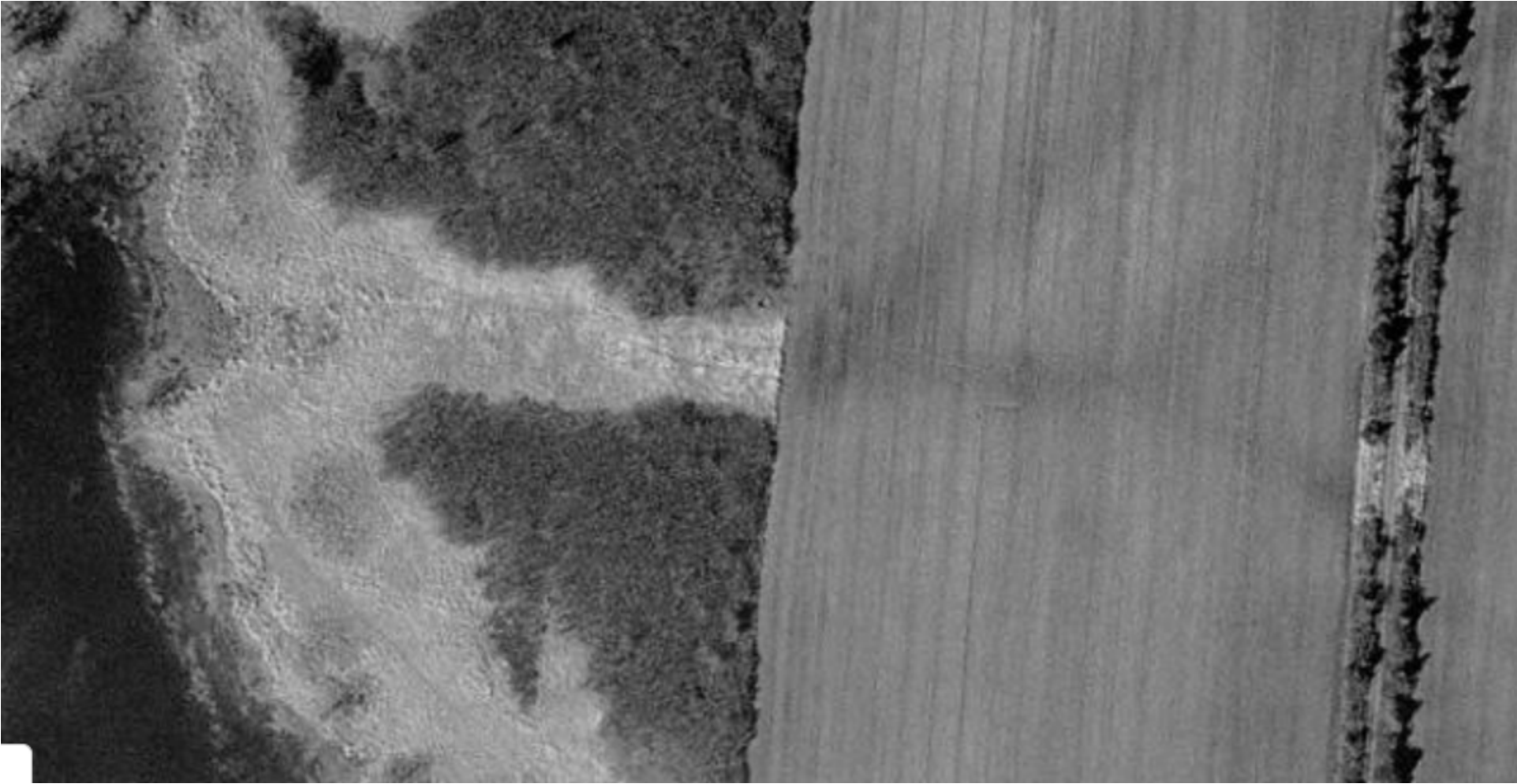
- **Big Creek Wetland Creation**
- **Lebo Creek Wetland Creation**
- **Cover Crop Program**
- **New Initiatives**



Big Creek Wetland



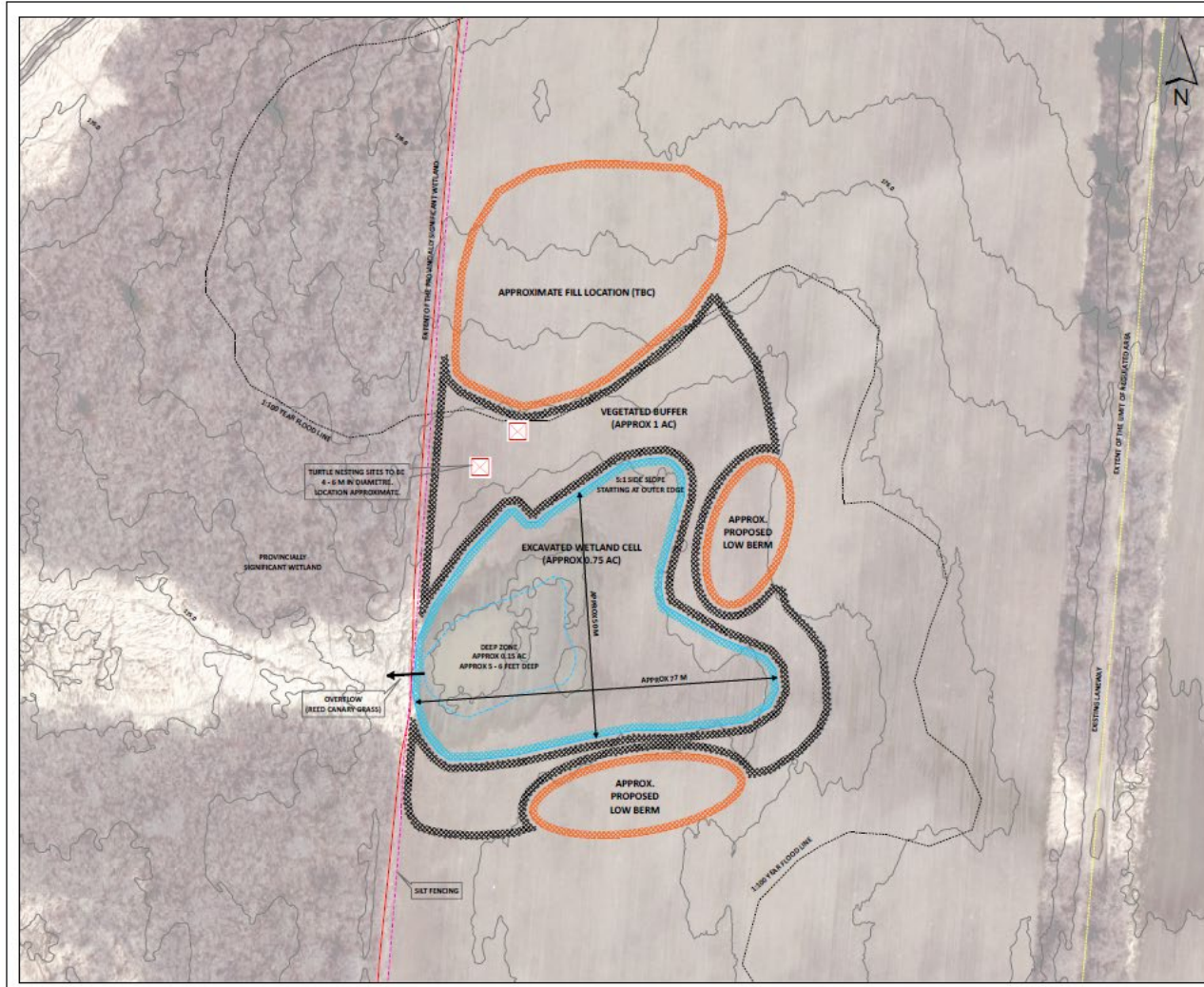
Big Creek Wetland -2020



Big Creek Wetland - 2019



Big Creek Wetland

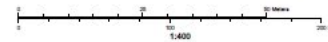


Proposed Wetland Concept HBCA - South of County Rd 50, AMHERSTBURG



WETLAND NOTES:
 APPROX AREA OF WETLAND FEATURE 0.75 AC.
 APPROX AREA OF DEEP ZONE IS 0.15 AC.
 APPROX DEPTH OF DEEP ZONE IS 3 - 6 FEET.
 SIDE SLOPE OF WETLAND FEATURE IS TO BE 5:1 STARTING AT THE OUTER EDGE.
 APPROX AREA TO BE EXCAVATED 0.75 AC (SEE SCHEDULE OF ITEMS AND PRICES FOR DETAILS).
 ALL MEASUREMENTS APPROXIMATE. NOT A PLAN OF SURVEY.

CONTOUR NOTES:
 CONTOUR INTERVAL 0.30 M.
 SOURCE DATA IS POSTED WITH A NON VEGETATED VERTICAL ACCURACY OF +/- 0.30 M.
 DERIVED DATASET FROM 2017 Aerial/LiDAR Derived DTM. CONTAINS INFORMATION LICENSED UNDER THE OPEN GOVERNMENT LICENCE (OMGRO). VERTICAL DATUM CONVERTED TO CGVD2011 BY SRCA.



Essex Region
Conservation Authority
ESTABLISHED BY THE PROVISIONS OF THE ENVIRONMENTAL PROTECTION ACT, 1986
15,000



Big Creek Wetland



Big Creek Wetland



Big Creek Wetland



Lebo Creek Wetland



Lebo Creek Wetland





Lebo Creek Wetland

- **Flood Mitigation**
- **Water Quality Improvements**
- **Increased habitat**
- **Protected via drainage act**



Lebo Creek Wetland

- **Significant cost increases due to land values and engineering**
- **Smaller impact**
- **Complicated Process**



Cover Crops & Climate Change



- **Sequester Carbon**
- **Improve Soil Structure**
- **Reduce Nutrient Runoff**



Cover Crops & Climate Change



- **Sequester Carbon**
- **Improve Soil Structure**
- **Reduce Nutrient Runoff**



Cover Crops & Climate Change



Clean Water ~ Green Spaces Program ELIGIBILITY GUIDELINES

All projects must be pre-approved before work is started

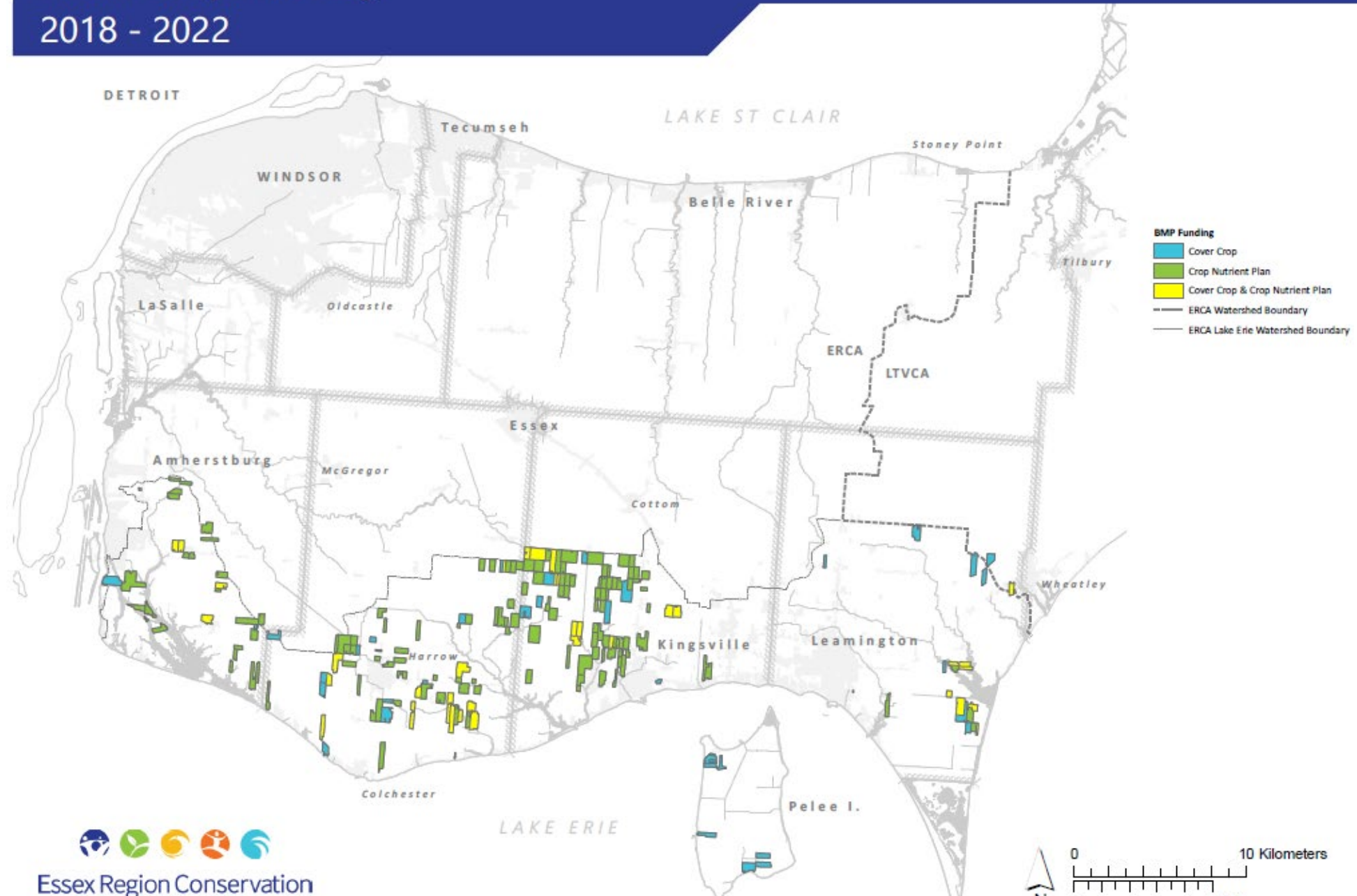
Soil Health and Nutrient Loss Reduction Projects • Region wide - funding is limited

Eligible Projects	Grant Rate	Maximum Grant	Staff Contacts
3 meter wide buffer strips	\$1/linear foot	\$1,500	Michael Dick, ext 369
Wind breaks	75%	\$3,000	mdick@erca.org
Soil erosion control structures (e.g. rock chutes, header tile retrofits, etc.)	75%	\$3,000	
Cover crops	\$15/acre	200 acres	



Cover Crop Funding

2018 - 2022



An aerial photograph of a beach with waves crashing onto the shore. The water is a dark, greyish-blue color, and the sand is a light, greyish-brown. There is a lot of driftwood scattered across the beach, including branches and logs. The sky is a clear, light blue. The text "Thank You" is overlaid in the upper right quadrant of the image.

Thank You