



# Sustainable Urban Neighbourhood (SUN)

*A program of:*



*In association with:*

**Sustainable Neighbourhood  
Action Program**



*Funded by:*

Ontario  
Trillium  
Foundation



Fondation  
Trillium  
de l'Ontario

*Supported by:*



**Otonabee  
CONSERVATION**

**peterborough** **NOURISH**

An agency of the Government of Ontario  
Un organisme du gouvernement de l'Ontario

Envision the most sustainable  
neighbourhood; one that is  
more resilient to climate  
change

**What do you see?**



Envision your current  
neighbourhood, transformed  
with your vision

**How would it look, feel, or  
sound?**



# FOCUS AREA #1

## Enhance Curtis Creek Corridor

In 2030, the community prides itself on its strong stewardship of Curtis Creek. Replanting along the shoreline has created a ribbon of rich biodiversity across the neighbourhood. Water quality has improved, and damage from riverine flooding is rare thanks to improvements to local infrastructure and the effective floodproofing of homes and properties within the creek's floodplain. The collaborative stewardship approach taken in East City-Curtis Creek has become a model for other neighbourhoods in Peterborough East-City.

How do we get there? Recommended actions include:



**1.a. Renaturalize and introduce stormwater management** projects on properties within the creek's 30m riparian buffer zone. Key opportunities include the municipal culvert reconstruction work happening on Caddy Street, Euclid Avenue, and Armour Road in 2019 and 2020.



**1.b. Establish a 'Friends of Curtis Creek' stewardship group** (with a complementary 'Junior Friends' group for youth) that collaborates with partners to monitor water quality, undertake regular creek clean-ups, and develop signage and educational programming.



**1.c. Introduce a collaborative floodproofing awareness and action program**, especially for residents living within the Curtis Creek floodplain.




### Sustainability themes addressed:

- ➔ Water
- ➔ Habitat and urban forests
- ➔ Energy and climate
- ➔ Community resiliency

### Naturally Vegetated

A 30m riparian buffer is recommended by scientists to support aquatic habitat

### Susceptible to Urban Flooding

 = areas (overland) flooding during 100-year storm



### Did you know?

Flooding in cities can take multiple forms. Riverine flooding happens when water in a river or creek overflows its usual channel. Urban, or overland, flooding happens when too much impermeable area and inadequate infrastructure make it difficult for large amounts of rain to be directed away from homes, gardens, and other places where it is unwanted. Both kinds of flooding impact residents in East City-Curtis Creek. See focus area 3.c. for actions to address urban (overland) flooding.



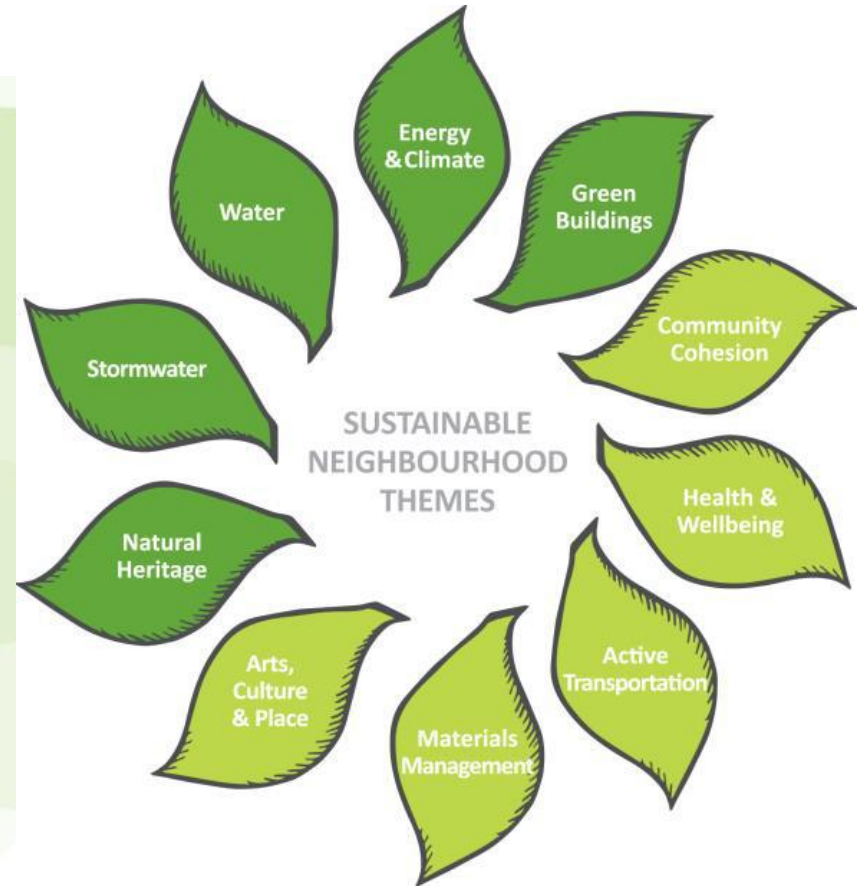
# The Model: SNAP

## Sustainability Framework

- Goals, objectives, targets
- Baseline
- Applies existing municipal and partner plans and integrates them with local priorities

## Projected outcomes

- Strategic retrofit projects and programs





A registered charity, we partner with individuals, businesses, other non-profit organizations and governments.

For over 25 years, GreenUP has envisioned a healthy and sustainable community and has worked to inspire and empower environmentally healthy and sustainable action in Peterborough and the surrounding area.

GreenUP offers dozens of programs and services to those living both full time and seasonally in the Kawartha Lakes region of Ontario.

# The Model: SUN Peterborough



# Project Planning & Action Pathway

The Sustainable Urban Neighbourhoods Program is a three-year initiative, funded by the Ontario Trillium Foundation and led by GreenUP. This program adopts the Toronto Regional Conservation Authority's Sustainable Neighbourhood Retrofit Action Plan approach to support the creation of a neighbourhood-based solution for urban renewal and climate action. As part of this program, residents, the City of Peterborough, Otonabee Conversation, and other community partners will be engaged in the process of collaborative action plan development, as well as in the implementation of Quick Start Demonstration projects. These demonstration projects will support diverse goals including: urban forest renewal, biodiversity, food production, habitat creation, and stormwater management. These demonstration projects will help to showcase the potential for positive change in each neighbourhood, will allow us to test and monitor innovative interventions, and will increase resident and partner buy-in for the process and Plan moving beyond the OTF-funded grant period.



## ACTION PLANNING

OTF-funded period (January 2017-December 2019)

Beyond 2019

### 1. Outreach & Engagement



Throughout the project, resident and partner engagement will be critical. Partnerships will be established to support planning, demonstration installations, ongoing implementation, evaluation, & monitoring.

Throughout

### 2. Neighbourhood Selection



Two neighbourhoods will be selected to participate in this program. Chosen from 4 to 5 candidate neighbourhoods, their selection will be based on partner input, initial baseline data and environmental needs, and community readiness.

Summer 2017

### 3. Baseline Analysis & Priority ID



Priority areas of focus will be identified in each neighbourhood based on municipal plans and objectives, resident priorities, and analysis of local baseline conditions. These focus areas will be documented and will inform the Action Plan development.

Fall/Winter 2017

### 4. Visioning & Testing



Together, we will work to reimagine possibilities for infrastructure and land renewal. Through quick-start demonstration projects, we can pilot innovative and context-sensitive ideas & approaches throughout the OTF-funded period.

Spring/Summer 2018

### 5. Refining & Aligning



Based on the lessons learned through our quick-start projects, as well as ongoing resident and partner input, we will refine our ideas and work to create alignments that support future implementation and sustainability.

Winter 2018

### 6. Action Plans Developed



Refined ideas and strategies will shape the development of the Action Plans, conceptual documents that will guide future collaborative action to deliver on multiple objectives in each neighbourhood. This will be the final planning outcome of the OTF grant.

Fall 2019

### 7. Continued Implementation & Evaluation



Beyond GreenUP's OTF grant, partners will continue to support the implementation and evaluation of the plans. Many actions with planned capital projects. Others may require additional funding. GreenUP, and other partners will continue to work to secure ongoing resources using the Plans as a guiding document.

Grant ends December 2019

NAP model, create two Neighbourhood Action Plans. GreenUP has supported the process through our resident engagement process.

Quick-start demonstration projects in each neighbourhood. Management and implementation of projects will be supported by funding from the OTF. The impact of neighbourhood-scaled interventions will be evaluated, both with respect to process and outcome. Key learnings will inform implementation strategies moving beyond the grant.

## OTF TIMELINE

### QUICK-START FOCUS THEMES:

- Stormwater Management
- Urban Forest Renewal
- Local Food Production
- Landscape Naturalization & Biodiversification
- Habitat Creation
- Other Emergent Restoration Priorities

Q-S Selection Criteria will guide the strategic implementation of projects.

Winter/Spring 2018

### 1. Quick-start Implementation Plans, Phase 1

Where Q-S focus themes align with neighbourhood priority areas, specific pilot projects will be identified and chosen according to the selection criteria. An implementation plan will be developed to guide strategic actions.

Spring/Summer 2018

### 2. Implement Q-S Phase 1 Projects

With support from residents and partners, and with funding from OTF, 500sq.m. of intensive, and 500sq.m. of low intensity urban restoration projects will be completed in each neighbourhood.

Winter 2018

### 3. Monitor, Plan for Phase 2

Following Phase 1 implementation, the interventions will be monitored to evaluate impact. Phase 2 will focus on completing unfinished projects and maintaining Phase 1 Q-S projects.

Spring/Summer 2019

### 4. Implement Q-S Phase 2 Projects

Phase 2 implementation will focus on completing the high and low intensity interventions. We will also work to apply lessons learned during P1.

Winter 2019

### 5. Monitor & Evaluate Q-Ss

The impact of neighbourhood-scaled interventions will be evaluated, both with respect to process and outcome. Key learnings will inform implementation strategies moving beyond the grant.

## QUICK-START ACTION

OTF-funded period (January 2017-December 2019)

Beyond 2019

# SUN Peterborough Framework

Inspiring



Visioning and Planning

Creating



Quick-Start Projects

Transforming



Education and  
implementation

# Visioning & Planning



# Visioning & Planning: Sustainability Themes



## Sustainability themes addressed:

---

- Water
- Habitat and urban forests
- Energy and climate
- Community resiliency



## Sustainability themes addressed:

---

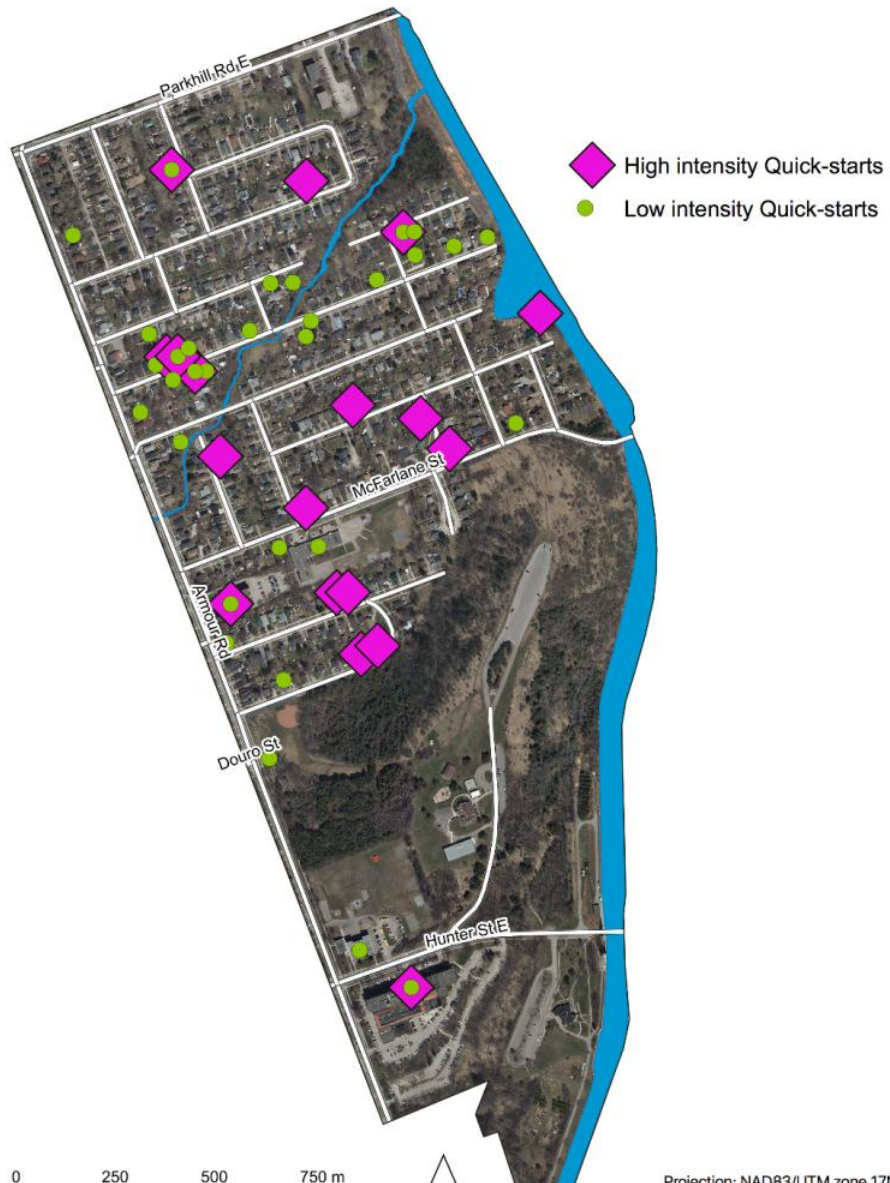
- Water
- Habitat and urban forests
- Energy and climate
- Healthy, active transportation and recreation
- Community building

# Quick-start Projects: Regenerative Engagement



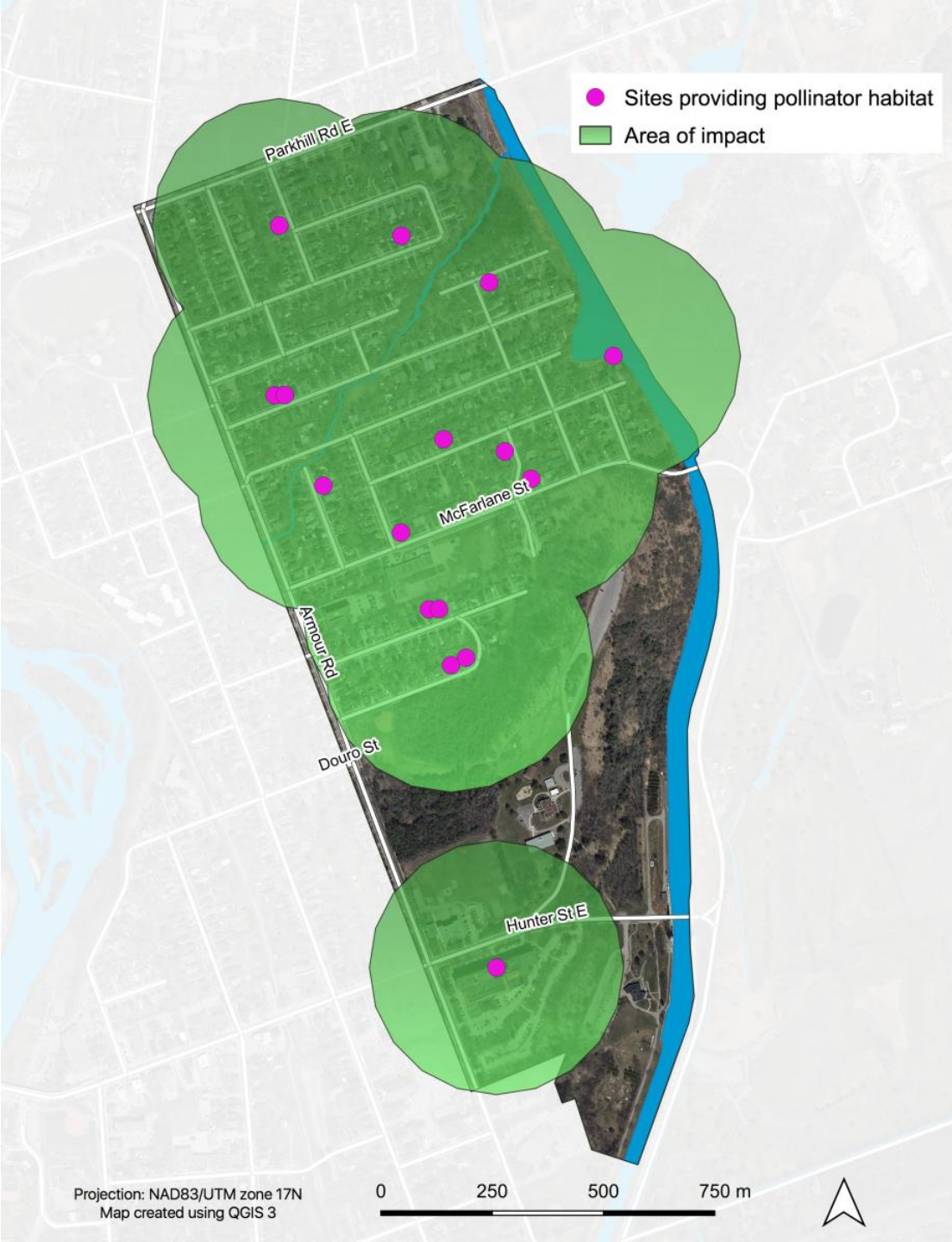
“We have enjoyed spending more time in our front yard and chatting more with our neighbours. We are happy about the benefits, like food for pollinators, reduced water usage, and avoiding the use of pesticides and herbicides.” – Tracey, KH Resident

# East City-Curtis Creek: 2018-2019



**High intensity Quick-actions include** pollinator gardens, drought tolerant gardens, rain gardens, naturalization, food gardens, and tree planting.

**Low intensity actions** include invasive species removal and garbage clean-ups, rain barrels, composters, bird and owl houses, bat houses, and garden designs.



## 2018-19 East City/Curtis Creek:

Pollinator habitat created

(approx. area: 0.88 km<sup>2</sup>)



**“Our rain garden works well, and has also attracted robins and butterflies! I am looking forward to seeing it grow and develop.” – Miriam EC-CC Resident**

- 147,700L of stormwater diverted annually
- 3,421L of waste diverted

# SUN Action Plans



# SUN Long-term Outcomes

## WATER

Reduce paved surface area in the neighbourhood by 800m<sup>2</sup>

Twenty-five per cent of residents commuting by public transit, walking, or cycling

## COMMUNITY RESILIENCE

## HABITAT AND URBAN FOREST

Planting 365 new trees, with 152 on residential properties

Additional 1000m<sup>2</sup> of community garden plots by 2030

## LOCAL FOOD SECURITY

# Toward an active, greener future



# SUN Actions

## TRANSFORM GREY TO GREEN



# Implementation

Implementation Framework will identify:

- Key partners for each action
- Supporting partners and other stakeholders
- Next steps with timelines identified for each
- Funding option and/or opportunities for alignment with other projects
- Interim targets and a plan for monitoring progress

# Alignment and integration of SUN with local policy and priorities

- City of Peterborough declared Climate Emergency
  - Draft Official Plan
  - Climate Change Action Plan

**SUN Future is Bright!**



## Rinse and Repeat

- Listen and adjust accordingly
- Create change as inspiration
- Celebrate

## Fail Forward

- Ongoing capacity to maintain collaboration
- Champions (resident/partners)
  - Data gaps

Thank you!



Heather Ray  
Manager of Water Programs  
GreenUP  
[heather.ray@greenup.on.ca](mailto:heather.ray@greenup.on.ca)  
705.745.3238 ext. 204

