



Natural Heritage Action Plan

November 21, 2019
Latornell Conservation Symposium

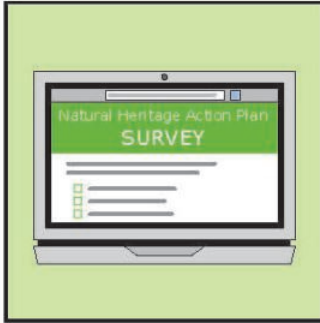


The City of Guelph's natural heritage system policies are leading-edge



To fulfill Guelph's Official Plan policies, additional studies, tools and resources are needed

- The Natural Heritage Action Plan is an implementation framework, together with:
 - Urban Forest Management Plan
 - Stormwater Management Master Plan
 - Water Supply Master Plan and Water Efficiency Strategy
 - Water and Wastewater Servicing Master Plan
 - Transportation Master Plan
 - Parks and Recreation Master Plan
 - Active Transportation Network Study
 - Guelph Trail Master Plan



390 responses to the Natural Heritage Action Plan survey, July 2017



3 workshops with **51** participants to develop and prioritize draft actions



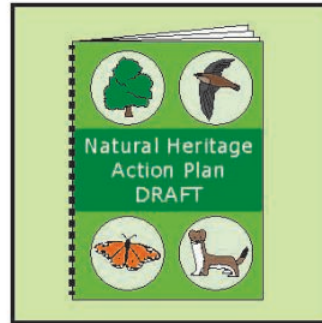
3 ward tours with members of City Council and the senior leadership team



16 additional survey responses to the workshop materials



15 meetings internally and with agencies (Grand River Conservation Authority) to develop actions, prioritize ideas and develop content



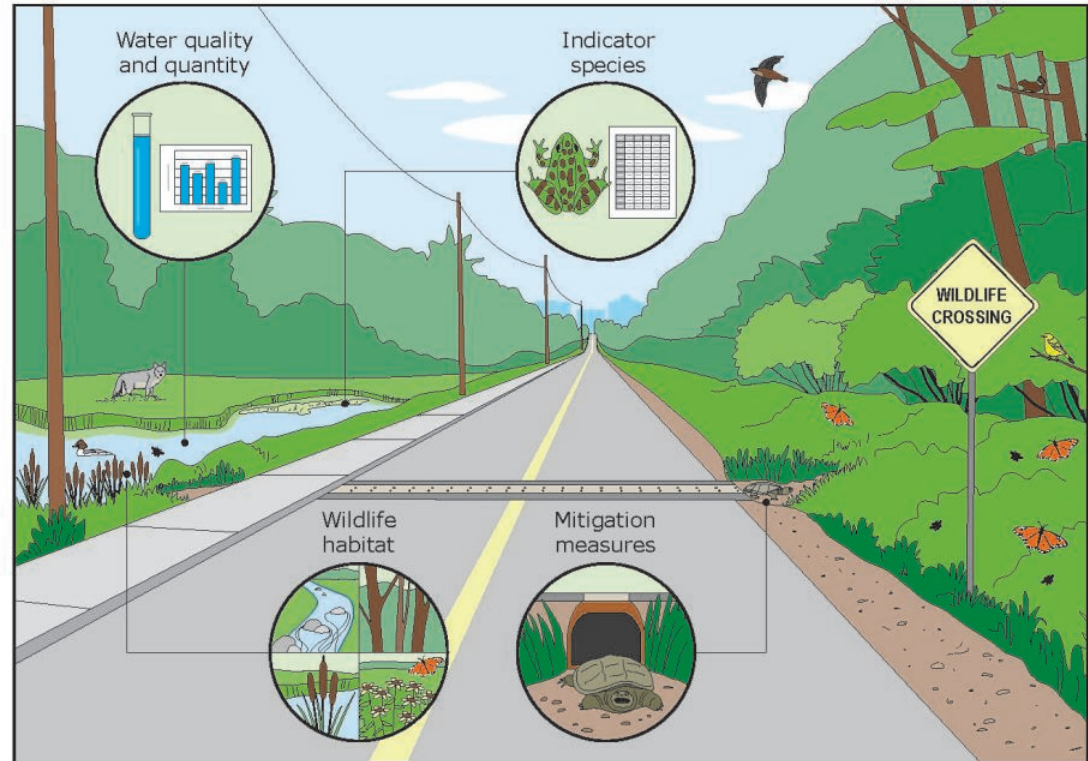
1 draft of the Natural Heritage Action Plan was reviewed internally

<https://guelph.ca/plans-and-strategies/natural-heritage-action-plan-2/>

Section 1: Watershed planning to manage growth and infrastructure

Themes:

- Supporting Growth through Watershed Planning
- Environmental monitoring to support science-based decision making



Section 1: Watershed planning to manage growth and infrastructure



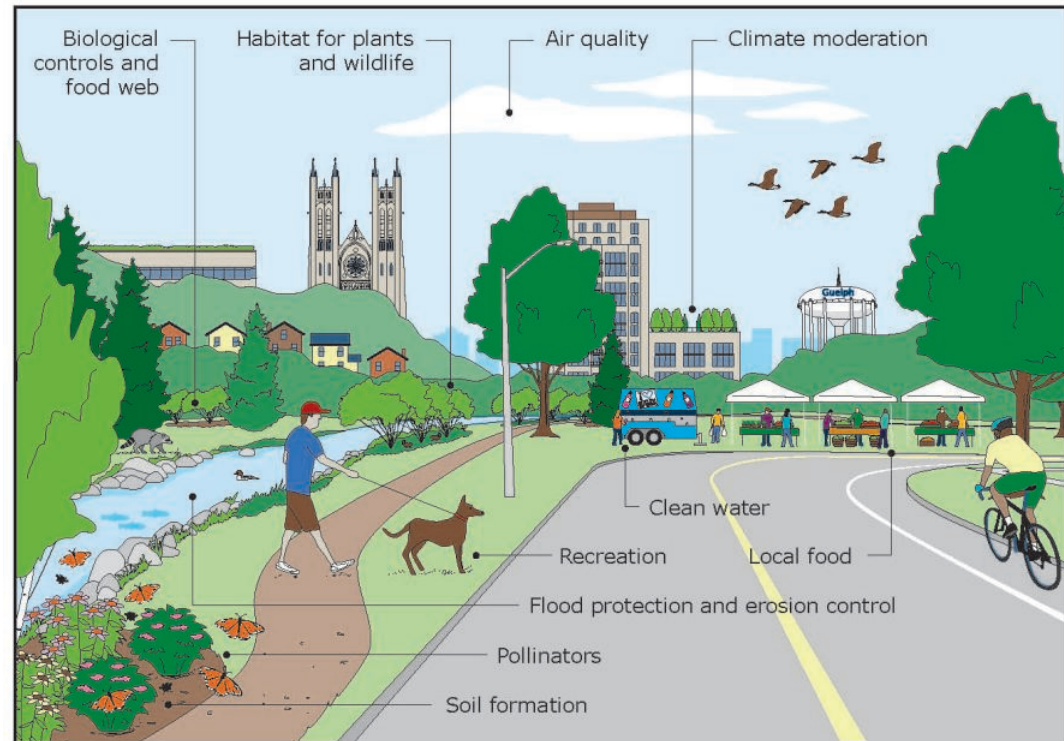
Priority Actions:

- Establish an internal watershed working group
- Complete a background review and gap analysis
- Launch a city wide ecological monitoring program
- Enhance and expand the existing stormwater management monitoring program

Section 2: Natural heritage and biodiversity conservation

Themes:

- Understanding and enhancing our biodiversity
- Continuous improvements in institutional processes and practices
- Plant and wildlife management in an urban setting
- Using conservation land securement to support long term preservation



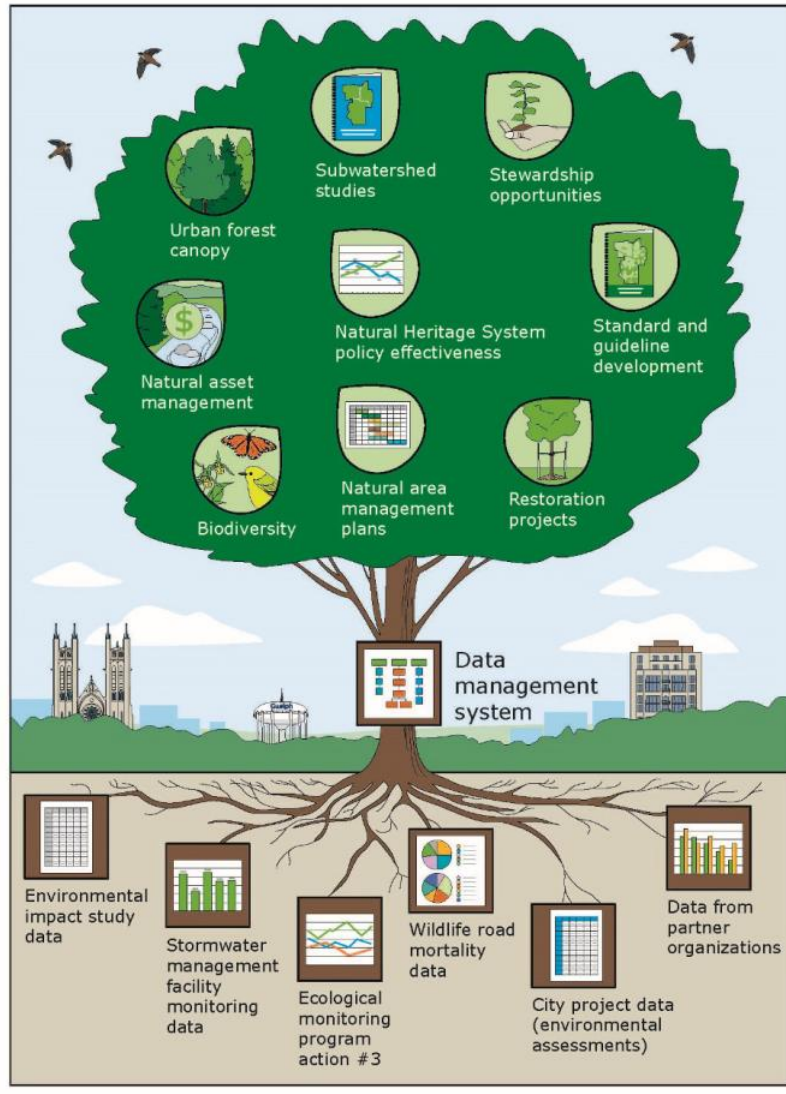
Section 2: Natural heritage and biodiversity conservation

Priority Actions:

- Produce a status of the Natural Heritage System Report that measures the effectiveness of our natural heritage policies
- Create a biodiversity strategy
- Update the City's locally significant species lists
- Develop a series of ecological technical guidelines and standards
- Create a comprehensive invasive species management strategy



Section 3: Data and Information Management



Theme:

- Data management and technology can improve efficiencies and knowledge mobilization

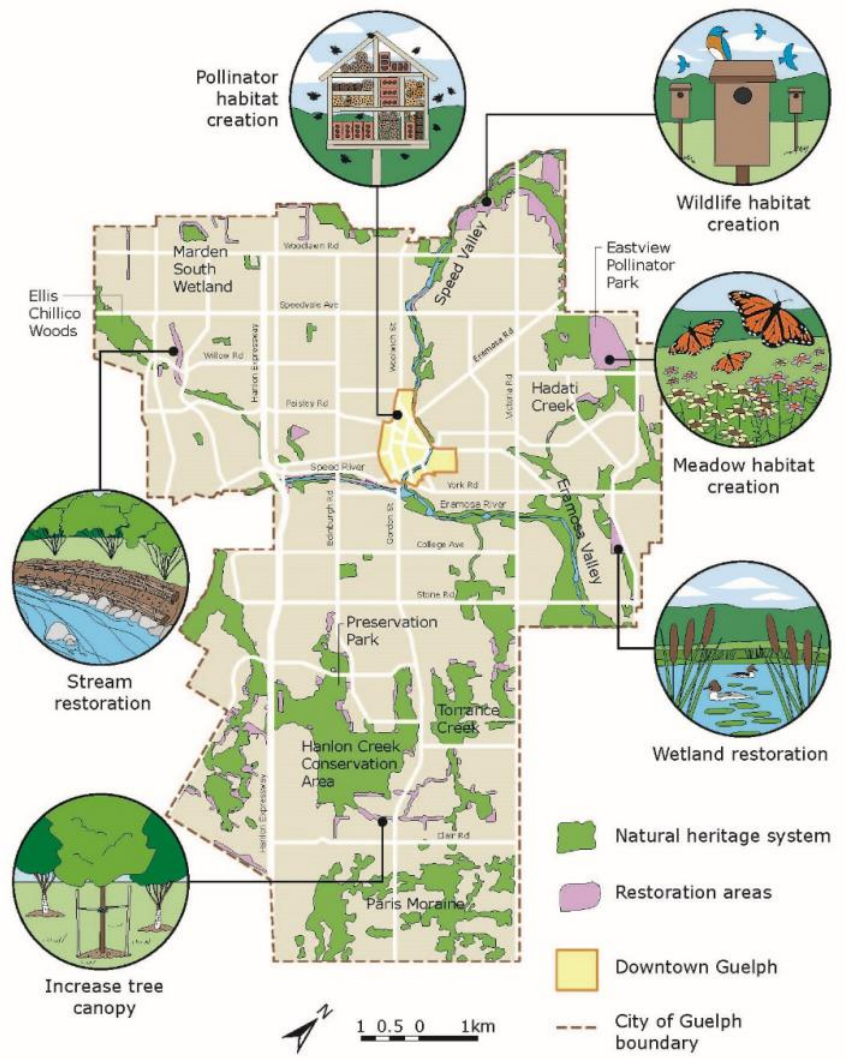
Priority Actions:

- Complete a SWOT exercise to inform the scope and function of a data management system
- Implement the development of a data management system

Section 4: Resilience and restoration planning

Themes:

- Urban ecosystem resilience supports a healthy community
- Restoring Urban Ecosystems to Support Biodiversity
- Continuous improvements in institutional processes and practices



Section 4: Resilience and restoration planning

Priority Actions:

- Develop a natural asset inventory inclusive of ecological goods and services
- Focus upcoming City-led restoration through planned capital projects
- Support and collaborate with community stewardship groups
- Develop Guelph specific low impact development (LID) standards for storm water management



Section 5: Fostering community support, raising awareness and engagement

Themes:

- Engagement models for supporting implementation
- Education, Outreach and Stewardship

Priority Actions:

- Review mandates of environmental committees
- Establish an Adopt-a-Space program
- Continue to grow and improve the City's EnviroGuide as a web-based platform



Summary

- The draft includes 38 Actions, with 16 priority actions to be commenced in the next 2 to 3 years
- The protection, enhancement and restoration of our natural spaces is something that everyone can be a part of



April Nix, Environmental Planner
april.nix@guelph.ca

Leah Lefler, Environmental Planner
leah.lefler@guelph.ca