



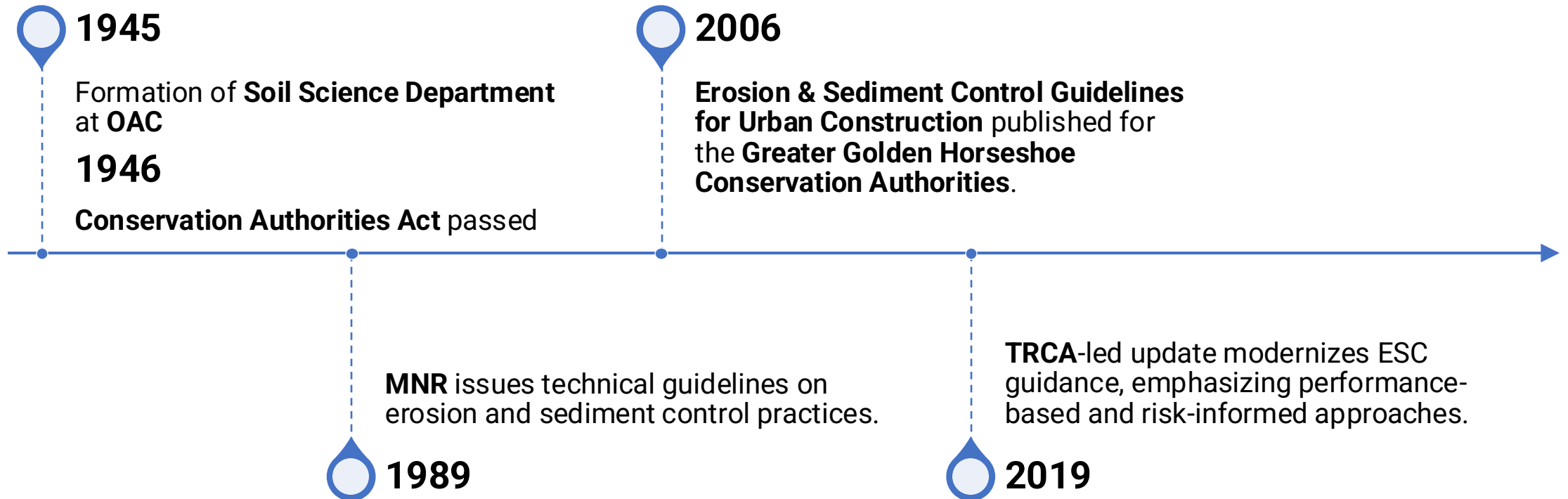
CRAFTING
CONSTRUCTIVE
COMMENTS:
*ENHANCING SEDIMENT AND
EROSION CONTROL THROUGH
COLLABORATIVE FEEDBACK*

ESC MATTERS

- ESC is often a last line of defense protecting natural systems.
- Strong comments = better design, faster approvals, and less rework.
- Ineffective comments can delay projects or lead to non-compliance.



A BRIEF HISTORY OF ESC IN ONTARIO



THE ROLE OF REVIEWERS

Municipal staff and peer reviewers bridge regulatory, technical, and environmental perspectives.

Review comments guide consultants toward compliance.

Consistency and clarity are essential for defensible decisions.

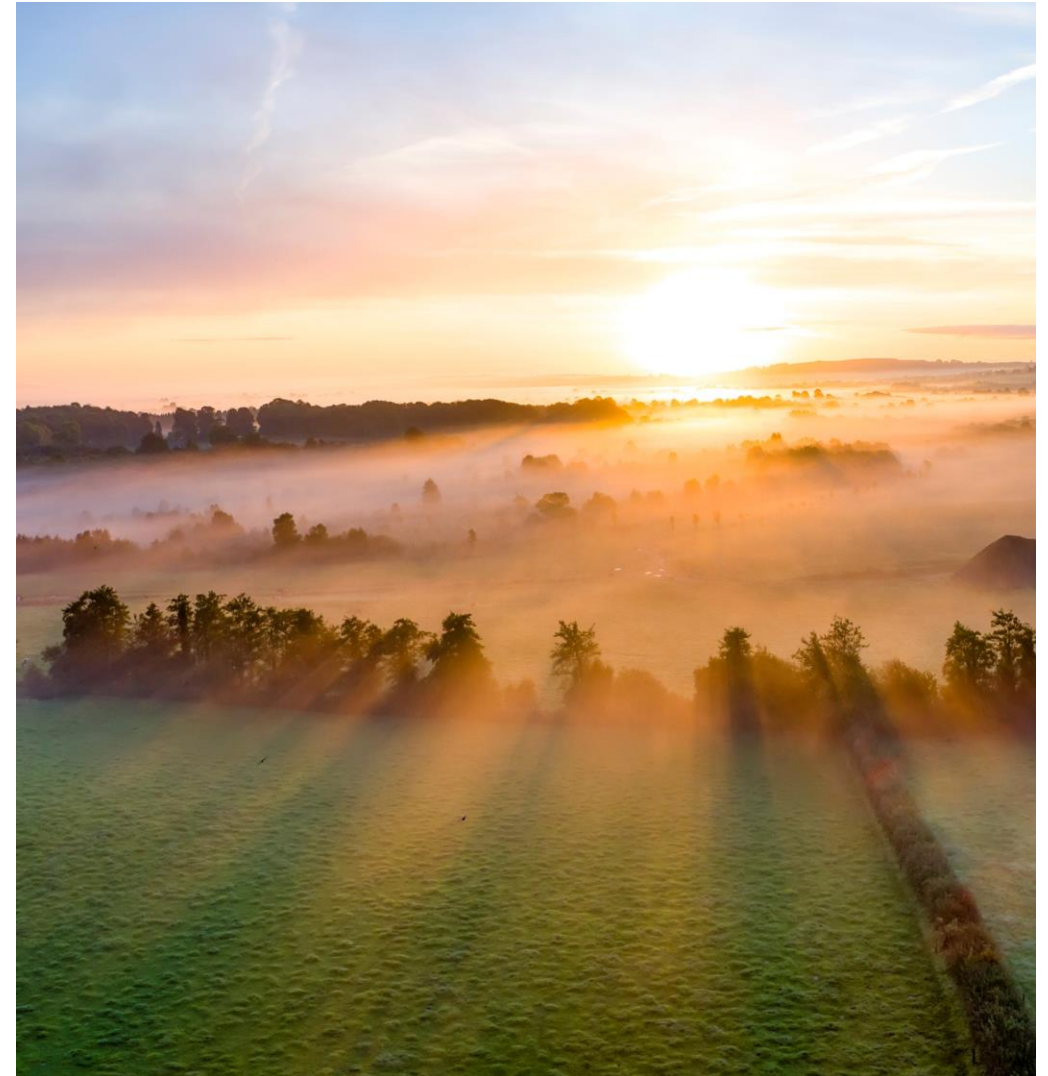


COMMON ISSUES IN ESC REVIEWS

| Examples | Critique |
|--|---|
| (Engineering review): "Use storm pond as temporary sediment basin." (Environmental review): "Do not direct sediment-laden water to the pond." | When reviewers give contradictory direction, it creates confusion and delays. |
| Install silt fence on all sides. | Mandating a specific control method or product limits innovation and may not suit all site conditions. It also shifts design responsibility away from the proponent. |
| Add more ESC controls. | Missing context. The updated ESC plan could miss the root concern the reviewer. |
| This ESC plan doesn't meet best practices. | Without referencing specific guidelines, the comment feels subjective and open to argument. |
| ESC plan needs to be improved. | Without identifying <i>why</i> or <i>where</i> , this can lead to unnecessary or misplaced controls, increasing costs without benefit. |
| Provide ESC measures for the grading phase. | ESC plans often fail not because of missing controls, but due to poor sequencing or maintenance. This comment doesn't address how or when measures will be installed and inspected. |

What Makes for Good Comments

| | |
|---------|---|
| Clear | Clear: State the issue and rationale (link to policy or observed risk). |
| Reflect | Contextual: Reflect site conditions (topography, soils, proximity to features). |
| Offer | Collaborative: Offer direction without prescribing design. |



CASE STUDY #1



Review Comment: Please provide a double-row erosion and sediment control fence with straw bales between along the property boundary (along street) to ensure the adjacent wetland will not be impacted by the proposed development.

THE ANATOMY OF A CONSTRUCTIVE COMMENT



Observation: Offsite wetland close to site.



Concern: Potential for sediment entry to regulated feature.



Outcome Goal: Prevent offsite impacts.



Comment: ESC measures should protect the offsite wetland during construction, using controls suitable for the site and soil type.

CASE STUDY #2

Review Comment:
Please provide an ESC
plan and ensure
double-row sediment
and erosion fence is
installed along the
wetland buffer.



REVISIT THE ANATOMY OF A CONSTRUCTIVE COMMENT



Observation: There is an onsite wetlands. Construction is upgradient.



Concern: Potential for sediment entry to regulated features.



Outcome Goal: Prevent onsite impacts.



Comment: ESC measures should protect the wetlands during construction, using controls suitable for the site topography and soil type.

TOOLS & TEMPLATES



USE STANDARDIZED REVIEW
TEMPLATES.



REFERENCE POLICIES DIRECTLY
(E.G., TRCA, OPSS 805, MECP
GUIDANCE).



TRACK RECURRING ISSUES TO
IMPROVE FUTURE REVIEWS.

COLLABORATION IN PRACTICE



KEY TAKEAWAYS



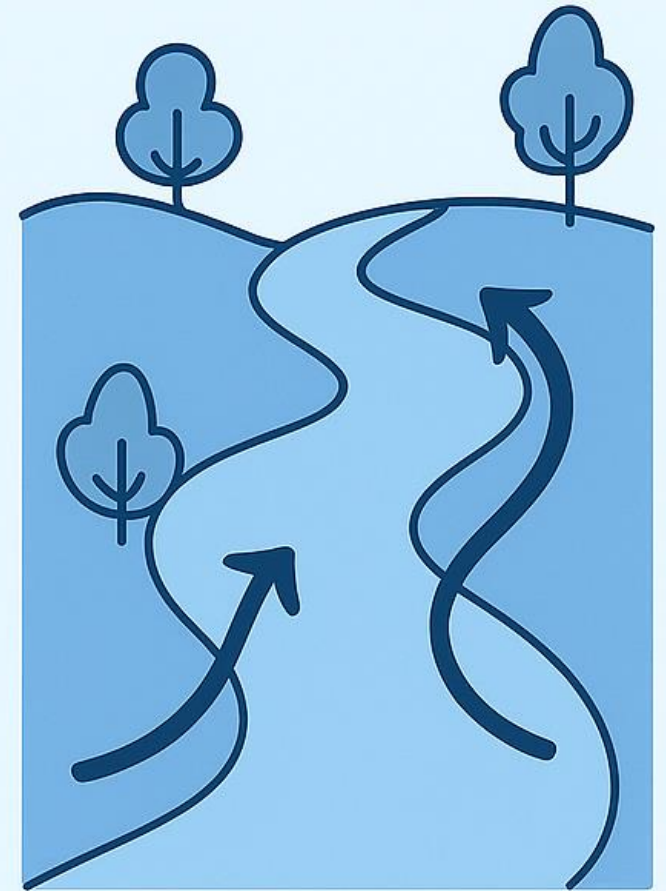
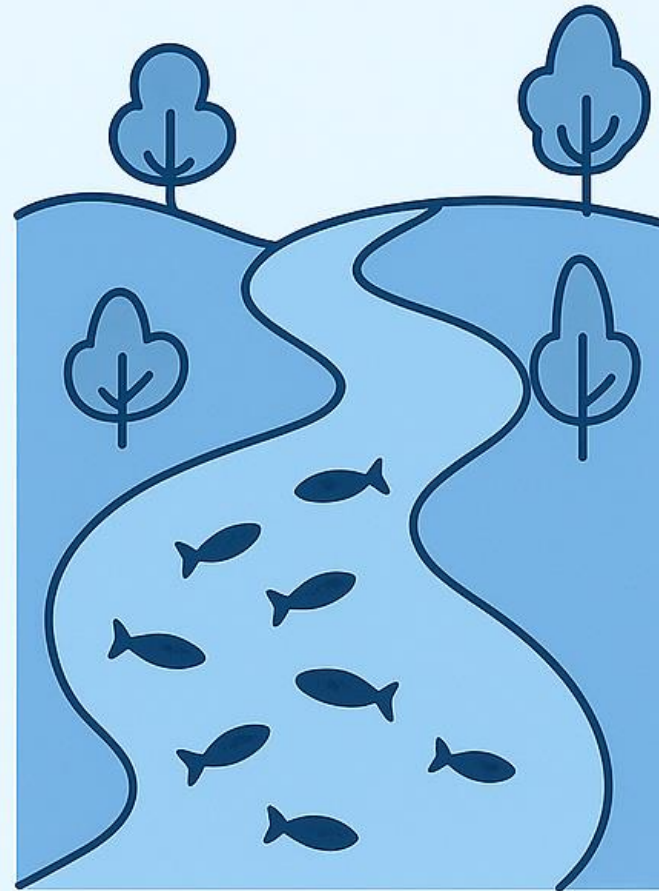
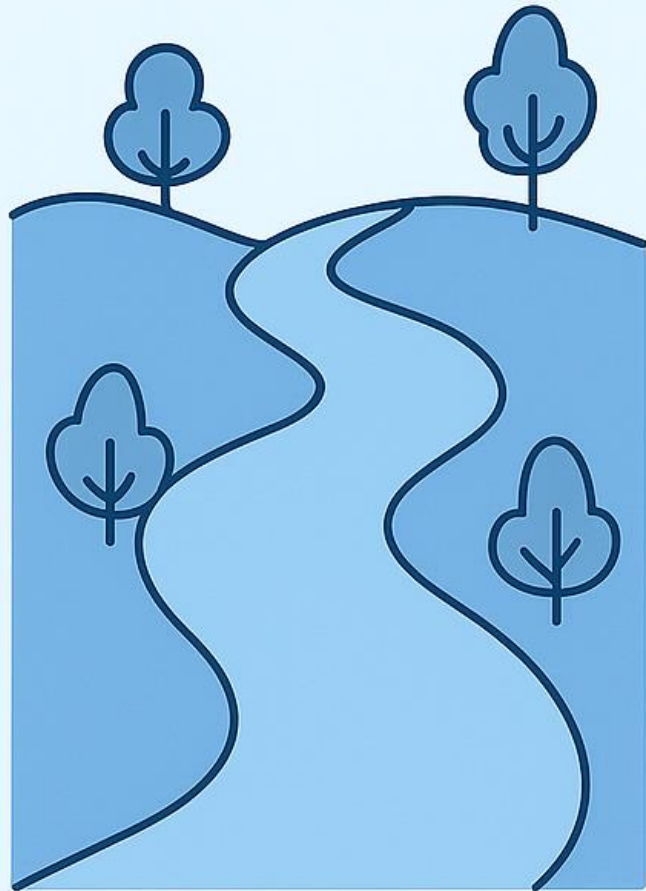
Good comments are clear, protective, and flexible.

Vague or prescriptive language creates barriers.

Reviewers can drive better environmental outcomes by focusing on intent and context.

Communication = Success.

CONTINUED ACTION



THANK YOU



Roxana Khoshravesh, Ph.D.

Ecologist

Environmental Services, Terrapex



Peter Sutton, P.Eng.

Vice President,

Environmental Services, Terrapex



Jason Burch, P.Eng., QP_{ESA}, QP_{RA}

Ecologist

Environmental Services, Terrapex

Thank you!



M. Letourneau, M.Sc.

Manager, Ecological Services

(226) 979-6056

M.Letourneau@terrapex.com

[!\[\]\(b73fbe1f68c0c0158be408bb873fa9d8_img.jpg\) Michelle Letourneau](#)

Q&A AND DISCUSSION

